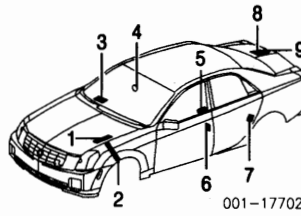


CTS 2003-04

SECTION INDEX

A/C HEATER/VENTILATION.....	122
A/C REFRIGERANT CAPACITIES.....	122
ABS/BRAKES.....	123
AIR BAG SYSTEM.....	123
AIR CLEANER.....	126
BACK WINDOW.....	132
CENTER CONSOLE.....	128
CLEAR COAT IDENTIFICATION.....	120
COOLING.....	121
COWL & DASH.....	128
ELECTRICAL.....	127
ELECTRONIC SUSPENSION COMPONENTS.....	124
EMISSION SYSTEM.....	127
ENGINE/TRANS.....	125
ENGINE/TRANS MOUNTS.....	126
EXHAUST.....	126
FRONT BUMPER.....	120
FRONT DOOR.....	130
FRONT FENDER.....	122
FRONT INNER STRUCTURE.....	123
FRONT LAMPS.....	120
FRONT SEAT.....	129
FRONT STEERING LINKAGE/GEAR.....	125
FRONT SUSPENSION.....	124
FUEL TANK.....	134
GRILLE.....	120
HOOD.....	121
INFORMATION LABELS.....	120
INSTRUMENT PANEL.....	128
LUGGAGE LID.....	133
PAINT CODE LOCATION.....	120
REAR BODY.....	134
REAR BUMPER.....	135
REAR DOOR.....	131
REAR DRIVE AXLE.....	134
REAR LAMPS.....	134
REAR SEAT.....	129
REAR SUSPENSION.....	133
ROCKER/PILLARS/FLOOR.....	129
ROOF.....	131
SEAT BELTS.....	129
SIDE BODY.....	132
SPECIAL CAUTIONS.....	120
STEERING PUMP.....	125
STEERING WHEEL/COLUMN.....	125
SUNROOF.....	132
UNDERHOOD DIMENSIONS.....	122
WHEEL.....	124
WINDSHIELD.....	127



001-17702

5 Label, Theft Deterrent	N.A.	0.00
6 Label, Odometer Service	10443718	14.00
7 Label, Child Security Instruction	RL 12451193	14.00
8 Label, Jack Usage	25748367	14.00
9 Label, Jack Caution		
2003	10301764	14.00
2004†	22722565	14.00

†Order by Application  
Label, Spare Wheel Info-See Wheel Section

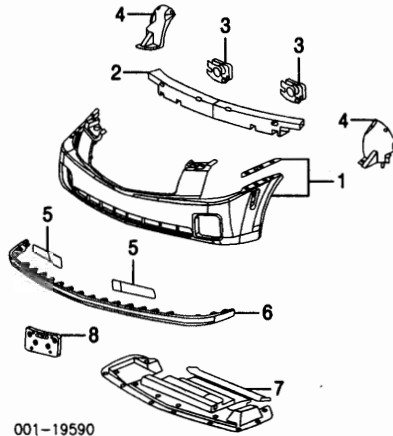
FRONT BUMPER

Use Procedure Explanations 1 and 28 with the following text.

CTS

Refinish Front Cover.....	3.3
Refinish Impact Bar.....	.5
R&I Front Cover Assy.....	1.4
R&I Bumper Assy.....	#1.6
#Includes R&I Front Cover Assy	
O/H Bumper Assy (Includes R&I).....	2.6

NOTE: All Parts in this section are included in overhaul unless noted otherwise.



001-19590

1 Cover, Front (P)	12335545	2.3	514.93
(P) Paint to Match			
2 Bar, Impact	25748246	2.6	162.12
3 Absorber, Energy	R/L 25746732-1	#.2	86.93
#w/Bumper Assy Removed, Not Included in O/H			
4 Extension, Cover	R/L 25771744-3	.3	13.46
5 Filler, Front Cover	R/L 25716144-3	#1.5	3.68
#Included in R&R Front Cover			
6 Dam, Air	25716142	.3	62.93
7 Deflector, Front Air-See Cooling Section			
8 Bracket, License Plate	25718714	.2	12.97

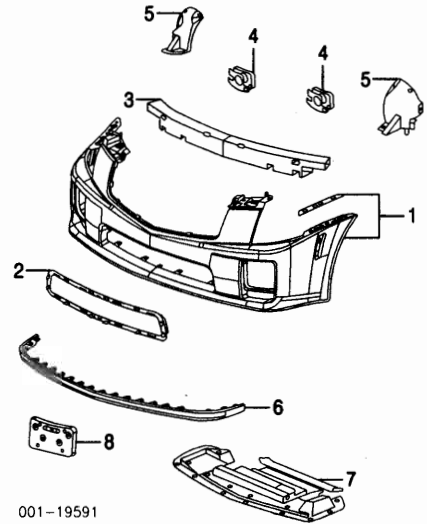
CTS-V

Refinish Front Cover.....	3.3
Refinish Impact Bar.....	.5
R&I Front Cover Assy.....	1.4
R&I Bumper Assy.....	#1.6
R&I Bumper Grille.....	#1.6
#Includes R&I Front Cover Assy	
O/H Bumper Assy (Includes R&I).....	2.8

NOTE: All Parts in this section are included in overhaul unless noted otherwise.

Illustration Located in Next Column

1 Cover, Front (P)	12335777	2.5	521.61
(P) Paint to Match			
2 Grille, Bumper	25750638	#1.6	257.29
#Included in R&R Front Cover			
3 Bar, Impact	25764982	2.6	162.12
4 Absorber, Energy	R/L 25746732-1	#.2	86.93
#w/Bumper Assy Removed, Not Included in O/H			
5 Extension, Cover	R/L 25750634-5	.3	28.85



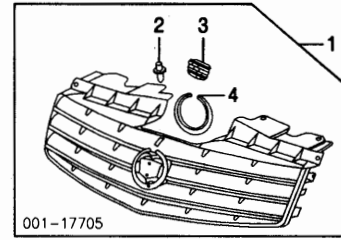
001-19591

#Included in R&R Front Cover			
6 Dam, Air	25716142	.3	62.93
7 Deflector, Front Air-See Cooling Section			
8 Bracket, License Plate	25750631	.2	14.25

GRILLE

CTS

Refinish Grille.....	1.6
R&I Grille.....	#1.6
#Included in R&R Front Cover	

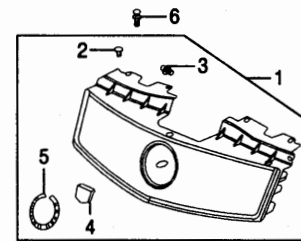


001-17705

1 Grille Assy	25765389	#1.6	191.19
#Included in R&R Front Cover			
2 Retainer, Grille† (8)	10134407		.63
3 Crest, Grille (Adhesive)†	25765149	.2	13.93
4 Wreath, Grille (Adhesive)†	25739188	.2	13.93
†Included w/Grille Assy			

CTS-V

R&I Grille.....	#1.6
#Included in R&R Front Cover	



001-19592

1 Grille Assy	21996486	#1.6	292.61
#Included in R&R Front Cover			
2 Retainer, Front† (3)	10121592		.30
3 Retainer, Rear† (8)	10134407		.63
4 Crest, Grille (Adhesive)†	25765149	.2	13.93
5 Wreath, Grille (Adhesive)†	25739188	.2	13.93
†Included w/Grille Assy			
6 Clip, Grille (8)	11518017		3.84

FRONT LAMPS

COMBINATION LAMP

Aim Lamps.....	.4
R&I Combination Lamp Assy.....	R/L #.3
#w/Front Cover Removed	

NOTE: R&R Does Not include aim lamps.

SPECIAL CAUTIONS

AIR BAGS

Refer to Procedure Explanation 29 for Supplemental Restraint/Air Bag Special Cautions.

PAINT CODE LOCATION

Paint code located on CD changer access panel on right luggage compartment trim panel.

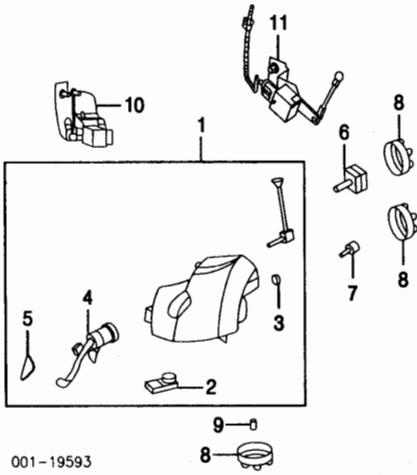
CLEAR COAT IDENTIFICATION

All colors are clear coat. White Diamond (Code 78) and Garnet Red are three stage.

INFORMATION LABELS

Illustration Located in Next Column

1 Label, Emission Control		
2003	12572727	14.00
2004†	12457796	14.00
†Order by Application		
2 Label, Air Bag Notice	N.A.	0.00
3 Label, Air Bag Caution	15765539	14.00
4 Label, Child Seat Caution	10426427	14.00



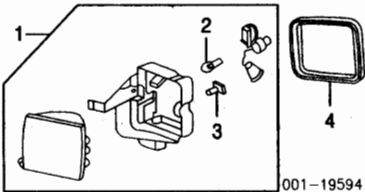
001-19593

<b>1 Lamp Assy, Combination</b> w/ H/Lamp Washers w/ H/Lamp Leveling	R/L	#.3	1263.37
RPO-TT7	04 R/L	25748359-60	#.3 1263.37
RPO-TT8	04 R/L	25748357-8	#.3 1263.37
w/o H/Lamp Leveling	R/L	25748355-6	#.3 1137.03
RPO-TT7	R/L	25748362-1	#.3 1263.37
w/o H/Lamp Washers	04 R/L	25748354-3	#.3 464.08
w/ H/Lamp Leveling	R/L	25748350-49	#.3 335.17
<b>#w/Front Cover Removed</b>			
<b>2 Ballast, Lamp</b> w/o Leveling System	R/L	12335548	#.5 369.38
<b>3 Retainer, Headlamp (a)</b> (a) As Required	R/L	25728475	5.62
<b>4 Pump, Headlamp Washer</b> <b>5 Nozzle, Headlamp Washer</b>	R/L	12335550-1 12335552-3	68.14 #.2 36.00
<b>#Included w/Combination Lamp Assy</b> <b>#w/Front Cover Removed</b>			
<b>6 Bulb, High Beam</b>	R/L	25735601	#.3 15.64
<b>7 Bulb, Low Beam</b> w/HID Lamps	R/L	25735603	#.3 292.47
w/o HID Lamps	R/L	25735602	#.3 22.38
<b>8 Cover, Bulb (3/Side)</b>	R/L	12335547	23.58
<b>9 Bulb, Park Lamp</b>	R/L	9442399	#.3 7.65
<b>#w/Front Cover Removed, R&amp;R One Side Complete, Included In R&amp;R Combination Lamp Assy</b>			
<b>10 Sensor, Front Height-See Front Suspension Section</b>			
<b>11 Sensor, Rear Height-See Rear Suspension Section</b>			

**SIGNAL/FOG LAMP**

R&I Signal/Fog Lamp Assy	R/L	#.5	
--------------------------	-----	-----	--

**#Included in R&R Front Cover**



001-19594

<b>1 Lamp Assy, Signal/Fog</b> CTS	R/L	25742394-5	#.5 193.63
CTS-V	R/L	25753700-699	#.5 232.07
<b>#Included in R&amp;R Front Cover</b>			
<b>2 Bulb, Signal Lamp</b>	R/L	12450108	#.5 2.61
<b>3 Bulb, Fog Lamp</b>	R/L	1999371	#.5 12.43
<b>#Included w/Signal/Fog Lamp Assy</b> <b>#R&amp;R One Side Complete, Included in R&amp;R Front Cover</b>			
<b>4 Seal, Lamp</b>	R/L	25740856-7	12.14

**SIDE MARKER LAMP**

R&I Side Marker Lamp	R/L	#.4	
----------------------	-----	-----	--

**#Included in R&R Front Cover**



001-17708

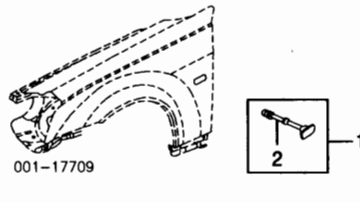
<b>1 Lamp, Side Marker</b>	R	25699094	#.4 23.73
	L	25699380	#.4 23.73

**#Included in R&R Front Cover**

**SIDE REPEATER LAMP**

R&I Side Repeater Lamp Assy	R/L	#.5	
-----------------------------	-----	-----	--

**#Included in R&R Fender, w/Front Wheelhouse Liner Removed Deduct .4**



001-17709

<b>1 Lamp Assy, Side Repeater</b>	R/L	15041202	#.5 86.43
<b>2 Bulb, Repeater Lamp</b>	R/L	9442399	#.5 7.65

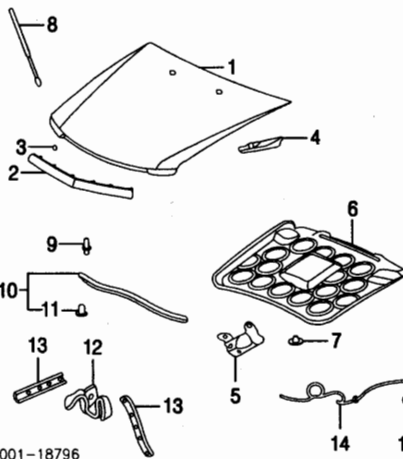
**#Included w/Side Repeater Lamp Assy**  
**#Included in R&R Fender, w/Front Wheelhouse Liner Removed Deduct .4**

**HOOD**

**Use Procedure Explanations 4 and 28 with the following text.**

Refinish Hood Outside	2.5
Add for Underside	1.3
Refinish Upper Hood Hinge	R/L .2
Refinish Lower Hood Hinge	R/L .2
R&I Hood Assy	.5
R&I Hood Moulding	.2
R&I Washer Nozzle	R/L #.4

**#Includes R&R Hood Insulator, Included in R&R Hood**



001-18796

<b>1 Panel, Hood</b>	25762684	1.5	480.76
<b>2 Moulding, Hood</b>	88892947	.2	81.47
<b>3 Nut, Moulding (6)</b>	3530297	1.12	
<b>4 Hinge, Upper Hood</b>	R/L 25701117-8	#.2	6.80
<b>#w/Hood Removed</b>			
<b>5 Hinge, Lower Hood</b>	R/L 25712642-3	#.2	15.29
<b>#w/Hood &amp; Fender Removed</b>			
<b>Bumper, Hood</b>			
Front	R/L 10279121	.1	.69
Side	R/L 10119823	.1	3.56
<b>6 Insulator, Hood</b>	03 25749292	.3	79.80
	04 25766981	.3	71.19
<b>7 Retainer, Hood Insulator (6)</b>	20064875	1.42	
<b>8 Strut, Hood Assist</b>	R/L 25767765	.2	25.00
<b>9 Stud, Assist Strut</b>			
Upper	R/L 11517670	3.56	
Lower	R/L 25610246	2.00	
<b>10 Seal Assy, Front Hood</b>	25640019	.2	13.21
<b>11 Retainer, Seal (7)</b>	332364	.64	
<b>#Included w/Front Hood Seal Assy</b>			
<b>12 Latch, Hood</b>	25664742	.3	26.50
<b>13 Brace, Front</b>	R/L 25717971	3.68	
<b>14 Cable, Hood Release</b>	25664724	#1.0	14.03
<b>#Includes R&amp;R Hood Latch &amp; Release Handle</b>			
<b>15 Handle, Release</b>	25712639	.2	14.44

**COOLING**

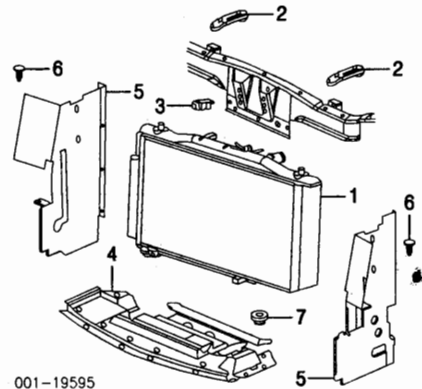
**Use Procedure Explanations 5 and 28 with the following text.**

R&I Radiator			
3.2L Eng			
Man Trans	#1.5		
Auto Trans	#1.7		
3.6L Eng	#1.7		
5.7L Eng	#1.7		

**#Includes R&R Cooling Fan & Shroud**

*Illustration Located in Next Column*

<b>1 Radiator</b> 3.2L Eng	25740114	#1.5	408.00
-------------------------------	----------	------	--------

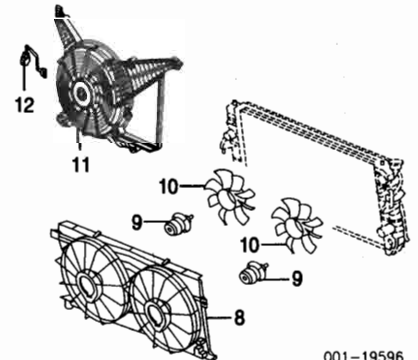


001-19595

Auto Trans	25750930	#1.7	473.95
3.6L Eng	88987622	#1.7	473.95
5.7L Eng	89022478	#1.7	338.44

**#Includes R&R Cooling Fan & Shroud**

<b>2 Bracket, Upper Rad</b> 3.2L, 3.6L Eng	R/L 25771547	9.97	
5.7L Eng	R/L 25771546	15.14	
<b>3 Sensor, Ambient Air</b>	25687483	m .4	19.14
<b>4 Deflector, Front Air</b> 3.2L, 3.6L Eng	25763401	41.95	
5.7L Eng	25752695	47.07	
<b>5 Baffle, Side Radiator</b>	R/L 25740779-8	22.05	
<b>6 Retainer, Baffle (4/Side)</b>	R/L 10134407	.63	
<b>7 Insulator, Lower Rad</b>	R/L 25728136	8.12	



001-19596

<b>8 Shroud, Fan</b> 3.2L Eng	25708388	#.8	228.90
3.6L, 5.7L Eng	88987624	#.8	196.76
<b>9 Motor, Cooling Fan</b> 3.2L Eng	R/L 25740113-2	#.8	196.58
3.6L Eng	R/L 25740119-8	#.8	196.58
5.7L Eng	R 89022481 L 25740118	#.8	196.62 #.8 196.58

**#Order by Application**

<b>10 Blade, Fan</b> 3.2L Eng	R 25720201	#.8	25.72
	L 25708390	#.8	25.72
3.6L Eng	R 25728385	#.8	25.72
	L 25728388	#.8	25.72
5.7L Eng	R/L N.A.	#.8	0.00

**#R&R Complete**

<b>11 Fan &amp; Motor, Aux Cooling</b> w/Towing Pkg (RPO-V92)	25728389	.6	165.88
<b>12 Harness, Aux Cooling Fan</b> Male Connector	88952822	m	57.92
Female Connector	88952832	m	43.27

*Illustration Located in Next Column*

<b>13 Hose, Upper Rad</b> 3.2L Eng	25740124	#.6	90.92
3.6L Eng	88987634	#.6	74.66
5.7L Eng	89047808	#.6	75.78
<b>14 Hose, Lower Rad</b> 3.2L Eng	25740123	#1.0	96.44
3.6L Eng	88958082	#1.0	67.86
5.7L Eng	89022513	#1.0	80.64

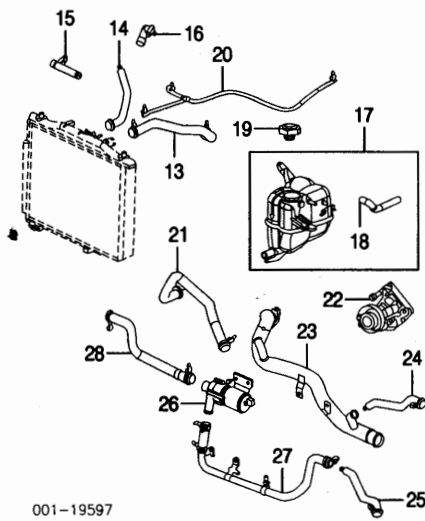
**#R&R Both 1.4**

<b>15 Outlet, Water</b> 3.2L Eng	90411629	#.7	48.54
3.6L Eng	12573965	#.7	72.96
5.7L Eng	N.A.	#.7	0.00

**#w/Upper Rad Hose Removed Deduct .4**

<b>16 Housing Assy, Thermostat</b> 3.2L Eng	55353492	#1.9	34.12
3.6L Eng	12586469	#1.9	60.72
5.7L Eng	N.A.	#1.9	0.00

COOLING Cont'd



001-19597

<b>Thermostat]</b>			
3.2L Eng	24420653	#1.9	m 12.38
3.6L Eng	12586468	#1.9	m 57.63
5.7L Eng	12581595	#1.9	m 15.36
<b>Seal, Thermostat]</b>			
3.2L Eng	24447061	#1.9	m 4.24
3.6L Eng (a)	12566395	#1.9	m 6.46
5.7L Eng (a)	12570307	#1.9	m 3.81
<i>#Included w/Thermostat Housing Assy</i>			
<i>(a) Order by Application</i>			
<b>#R&amp;R Complete, w/Intake Resonator Assy Removed, Includes R&amp;R Water Outlet</b>			
17 Tank Assy, Radiator Surge	25769371	2.6	m 86.07
18 Hose, Overflow]	25727606		m 16.26
<i>#Included w/Radiator Surge Tank Assy</i>			
19 Cap, Tank (a)	15066786		m 9.99
<i>(a) Order by Application</i>			
<b>Hose, Tank Inlet</b>			
3.2L Eng	25740127	.7	m 102.38
3.6L Eng	88987636	.7	m 98.06
5.7L Eng	89022484	.7	m 108.50
<b>Hose, Tank Outlet</b>			
3.2L Eng	25740125		m 119.40
3.6L Eng	88956900		m 105.08
5.7L Eng	N.A.		m 0.00
<b>Pump, Main Water</b>			
3.2L Eng	55352002	m #2.2	m #66.68
3.6L Eng	12569029	m #2.2	m 156.21
5.7L Eng	89017457	m #2.2	m 0.00
<i>#w/Intake Resonator Assy Removed</i>			
<b>Belt, Drive</b>			
3.2L Eng	24441692	.6	m #42.78
3.6L Eng	12578002	.6	m #55.36
5.7L Eng	12572188	.6	m #53.28
<b>Pipe, Rad Outlet</b>			
3.2L Eng	13131732		m 118.00
3.6L Eng	12583201		m 43.48
5.7L Eng	89022513		m 80.64
<b>Hose, By-Pass</b>			
3.2L Eng	25740133	.4	m 20.32
<b>Hose, Heater Inlet</b>			
3.2L Eng	25740130	.6	m 40.70
3.6L Eng	88958007	.6	m 29.48
5.7L Eng	N.A.	.6	m 0.00
<b>Pump, Aux Water</b>			
3.2L Eng	25734790	.7	m 155.01
<b>Hose, By-Pass Inlet</b>			
3.2L Eng	25740132		m 58.78
<b>Hose, Heater Outlet</b>			
3.2L Eng	25740131	.6	m 29.36
Valve, Heater By-Pass	25740115	.6	m 90.11

A/C REFRIGERANT CAPACITIES

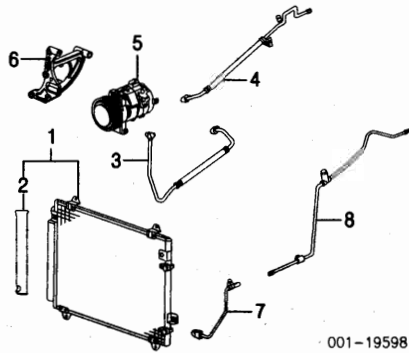
A/C R-134a Refrigerant Capacity  
2003-04: 20.8 Ozs (1.3 Lbs)

A/C /HEATER/VENTILATION

Use Procedure Explanation 6 with the following text.

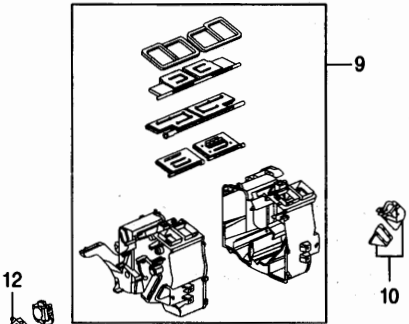
R&I Condenser Assy	m 1.3
Evacuate & Recharge System	m 1.4
Recover Refrigerant	m .3

NOTE: R&R Does Not include recover, evacuate and recharge system.



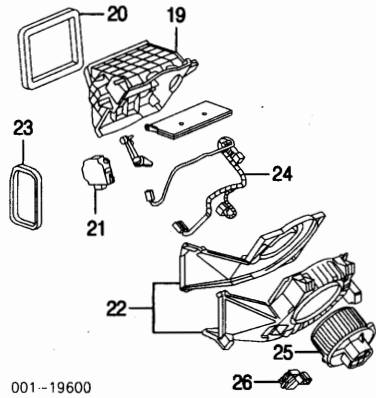
001-19598

1 Condenser Assy	25728392	m 1.3	401.11
2 Receiver/Drier]	25740116	m	30.20
<i>#Included w/Condenser Assy</i>			
<b>Hose, Condenser</b>			
3.2L Eng	25698007	m .7	93.27
3.6L Eng	25742863	m .7	93.27
5.7L Eng	25752700	m .7	106.23
<b>Hose, Compressor</b>			
3.2L Eng	25745132	m .7	155.13
3.6L, 5.7L Eng	25765386	m .7	155.13
<b>Compressor</b>			
3.2L Eng	25698006	m 2.3	785.82
3.6L Eng	25742889	m 2.3	506.28
5.7L Eng	25752698	m 2.0	483.56
<b>Belt, Drive</b>			
3.2L Eng-See Cooling Section			
3.6L Eng	12578001	.5	15.00
5.7L Eng	12578549	.5	40.54
<b>Bracket, Compressor Mtg</b>			
3.2L Eng	24403558		40.96
3.6L Eng	12574159		25.23
5.7L Eng	12578548		45.25
<b>Tube, Condenser Outlet</b>			
7 Front	25720202	m .6	55.43
8 Rear			
3.2L Eng	25745129	m .8	71.65
3.6L Eng	25743031	m .8	93.27
5.7L Eng	25770403	m .8	120.42



001-19599

9 Case, A/C/Heater	25767772	m #2.6	271.62
<i>#w/Instrument Panel Removed</i>			
10 Duct, Outlet	R 25740423	m	26.40
	L 25740421	m	26.40
11 Actuator, Mode	25740394	m 1.3	70.89
12 Actuator, Temp	25740395	m 1.6	54.25
13 Core, Evaporator	25740389	m #2.9	301.94
14 Valve, Expansion	25740393	m	120.84
15 Tube, Evaporator	25740420	m	36.74
16 Core, Heater	25740392	m #2.3	66.39
17 Module, A/C/Heater	25767772	m #2.1	271.62
<i>#w/Instrument Panel Removed</i>			
18 Hose, Drain	25740400		14.46
<i>Illustration Located in Next Column</i>			
19 Inlet, Air	25740407	m	85.75
20 Seal, Inlet	N.A.	m	0.00
21 Actuator, Temperature			
3.2L Eng	25740395	m	54.25



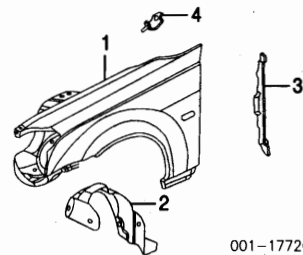
001-19600

3.6L, 5.7L Eng	25740409	m	53.25
22 Housing, Blower	N.A.	m	0.00
23 Seal, Housing	N.A.	m	0.00
24 Harness, Blower	25740410	m	130.93
25 Motor, Blower	25740408	m .8	119.01
26 Module, Blower	25740415	m 1.0	103.85

FRONT FENDER

Use Procedure Explanations 7 and 28 with the following text.

Refinish Fender Outside	R/L	1.9
Add to Edge Fender	R/L	.5
R&I Fender Assy	R/L	#3.5
<i>#Includes R&amp;I Front Cover &amp; Hood Assy, R&amp;I/R&amp;R Combination Lamp Assy, Front Wheelhouse Liner &amp; Front Rocker Moulding</i>		

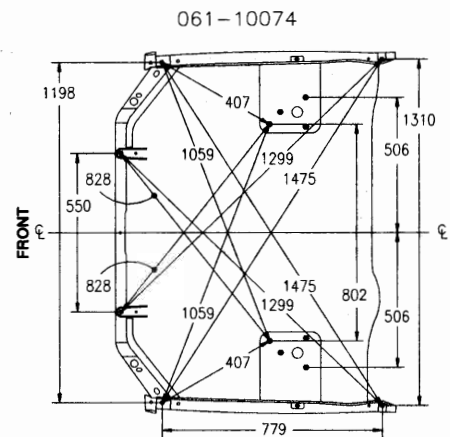


001-17720

1 Fender			
w/Side Repeater Lamps	R/L 88890924-3	#4.0	319.88
w/o Side Repeater Lamps	R/L 88890922-1	#3.9	319.88
<i>#Includes R&amp;I Front Cover &amp; Hood Assy, R&amp;I/R&amp;R Combination Lamp Assy, Front Wheelhouse Liner &amp; Front Rocker Moulding</i>			
2 Liner, Frt Whihse	R 25765934	.4	43.22
	L 25765935	.4	43.61
Retainer, Liner]	R/L 11518017		3.84
<i>#As Required</i>			
3 Insulator, Fender	R/L 25740186-7		20.92
4 Bracket, Center Fender	R/L 25705724-5		3.80

UNDERHOOD DIMENSIONS

CTS



CTS-V

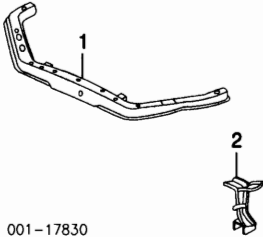
Information not available at time of publication.

**FRONT INNER STRUCTURE**

Use Procedure Explanations 8 and 28 with the following text.

**FRONT**

Refinish Radiator Support Complete.....	1.5		
Refinish Upper Tie Bar.....	1.0		
Refinish Upper Tie Bar Reinf.....	R/L	.4	
R&R Radiator Support Complete.....	#7.5		
<i>#Includes R&amp;R/R Side Radiator Baffles, Hood Bumpers, Headlamp Washer Hoses, Radiator, Fan Shroud, Cooling Fan Motor, Fan Blade, Hood Latch, R&amp;R Upper Tie Bar, Upper Tie Bar Reinforcements &amp; D&amp;C Hood Release Cable &amp; Wire Harness</i>			
Add to R&R Radiator Support Complete			
To R&R/R Base Model Mechanical Components.....	m	#2.3	
<i>#Includes R&amp;I Air Cleaner Assy, R&amp;I/R&amp;R Front Impact Sensor, Ambient Air Sensor, A/C Condenser, Power Steering Cooler, Mass Airflow Sensor &amp; Resonator Assy</i>			
w/Auto Trans.....	.2		
w/Aux Cooling Fan.....	#.2		
<i>#Includes R&amp;I/R&amp;R Aux Cooling Fan &amp; Motor</i>			

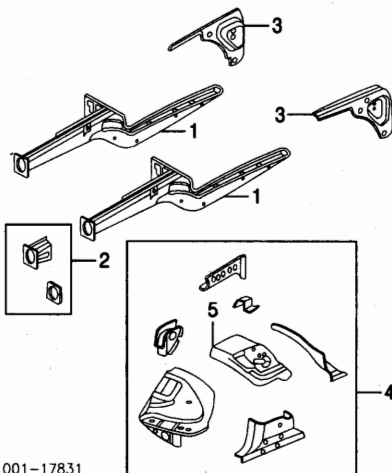


001-17830

1 Bar, Upper Tie	25739858	s	2.5	173.05
2 Reinf, Upper Tie Bar	R/L 25754337-8	s	1.5	17.73

**SIDE**

Refinish Side Rail.....	R/L	1.0	
Refinish Side Rail Ext.....	R/L	.5	
Refinish Upper Side Rail.....	R/L	.5	
Refinish Front Wheelhouse Panel Assy.....	R/L	1.0	
Refinish Front Strut Housing.....	R/L	.5	



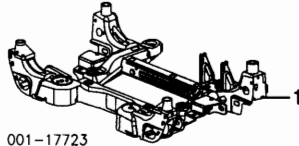
001-17831

1 Rail, Side	R/L 25742012-3	s	#10.5	365.66
<i>#w/Radiator Support Removed, w/Front Wheelhouse Panel Removed Deduct 2.0</i>				
2 Ext, Side Rail	R/L 88891089-90	s	#4.0	274.31
<i>#Approximately 205mm in length</i>				
<i>#w/Upper Tie Bar Reinf Removed</i>				
3 Rail, Upper Side	R/L 25693500-1	s	3.0	15.25
4 Panel Assy, Front Wheelhouse	R 25757091 L 88986211	s	#7.5	326.12 409.02
<i>#w/Radiator Support Removed</i>				
5 Housing, Frt Strut	R 25734709 L 25734710	s		100.04 105.06
<i>#Included w/Front Wheelhouse Panel Assy</i>				

**SUB-FRAME**

Illustration Located in Next Column

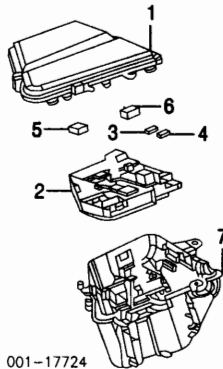
1 Sub-Frame	2003			
-------------	------	--	--	--



001-17723

To VIN 155832	25767292	m	#4.0	735.60
From VIN 155833	25767292	m	#4.0	735.60
2004				
Soft Ride Susp, Sport Susp	25767292	m	#4.0	735.60
Ride/Handling Susp	25752679	m	#4.0	735.60
<i>#Includes R&amp;I/R&amp;R Lower Control Arms &amp; Stabilizer Shaft</i>				

**ELECTRICAL COMPONENTS**



001-17724

1 Cover, Fuse Box	03 25706726		.1	26.23
	04 25745686		.1	30.72
2 Block, Fuse				
w/ H/Lamp Washers	03 25743732	m		287.88
	04 25743049	m		238.11
w/o H/Lamp Washers	03 25743730	m		288.16
	04 25743050	m		238.11
3 Fuse, Maxi	N.A.		.2	0.00
4 Relay, Micro	N.A.		.2	0.00
5 Relay, Headlamp Washer	N.A.		.2	0.00
6 Breaker, Circuit	12077863		.2	9.63
7 Bracket, Fuse Box	25706727			26.23
Module, Body Control	25744802	m	.5	197.26
<i>#Order by Application</i>				

**AIR BAG SYSTEM**

Use Procedure Explanation 30 with the following text.

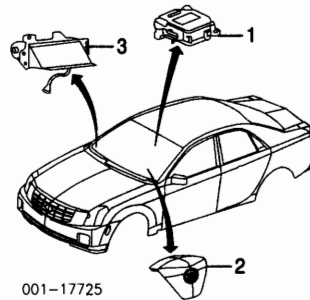
NOTE 1: R&R Does Not include disable and enable or diagnose Air Bag System.

NOTE 2: Refer to Procedural Explanation 30 for Supplemental Restraint/Air Bag System Component Inspection and Replacement Information.

NOTE 3: For Air Bag System Service procedures, refer to Manufacturer's Service Repair Manual or Mitchell's Air Bag Service and Repair Manual.

**FRONT**

Disable & Enable Air Bag System.....	m	.5
Diagnose Air Bag System (if Required).....	m	#.5
<i>#Includes Disconnect &amp; Connect Scan Tool &amp; Retrieve/Clear Trouble Codes</i>		



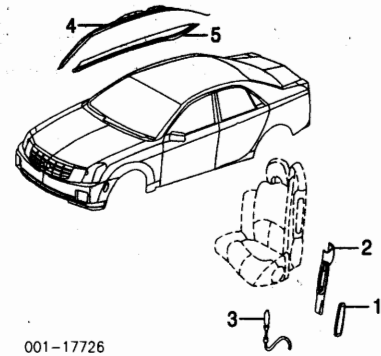
001-17725

1 SDM Unit	03 12232130	m	1.0	273.90
	04 12229320	m	1.0	209.01
2 Module, Driver Air Bag	25750363	m	.4	670.49
<i>Coil, SIRI-Serviced w/Column Harness</i>				
<i>#See Steering Wheel/Column Section</i>				
3 Module, Pass Air Bag	25738010	m	#.7	670.49
<i>#w/Instrument Panel Removed</i>				
Sensor, Front Impact	25744736	m	.5	54.88

Pretensioner, Seat Belt-See Seat Belts Section  
#Serviced w/Seat Belt

**SIDE**

Disable & Enable Air Bag System.....	m	.5
Diagnose Air Bag System (if Required).....	m	#.5
<i>#Includes Disconnect &amp; Connect Scan Tool &amp; Retrieve/Clear Trouble Codes</i>		



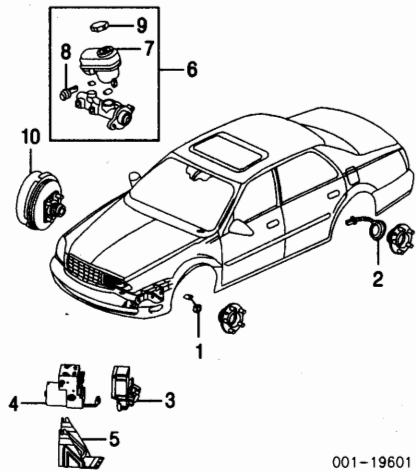
001-17726

1 Module, Seat Air Bag				
Driver Side				
Black (RPO-191)	03 25756778	m	#.4	207.26
	04 25760566	m	#.4	209.01
Gray (RPO-131)	03 25721616	m	#.4	209.13
	04 25760565	m	#.4	209.01
Neutral (RPO-701)	03 25721618	m	#.4	204.63
	04 25760567	m	#.4	209.01
Pewter (RPO-691)	25721617	m	#.4	209.13
Passenger Side				
Black (RPO-191)	25756777	m	#.4	207.26
Gray (RPO-131)	25721613	m	#.4	209.13
Neutral (RPO-701)	25760563	m	#.4	209.01
Pewter (RPO-691)	25721614	m	#.4	204.63
<i>#w/Seat Assy Removed</i>				
2 Housing, Seat Air Bag				
Driver Side	88897616			17.02
Passenger Side	88897617			16.96
3 Sensor, Side Impact	R/L 25741820	m	.6	65.12
4 Bag, Side Curtain Air	R/L 25766658	m	#2.4	209.01
<i>#Includes R&amp;R Side Garnish Moulding</i>				
<i>5 Moulding Assy, Side Garnish-See Windshield Section</i>				

**ABS/BRAKES**

Bleed System.....m .5

NOTE: R&R Does Not include bleed brake system.



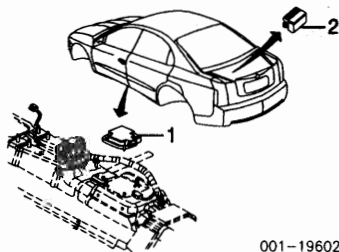
001-19601

1 Sensor, Front ABS	-See Front Suspension Section			
<i>#Serviced w/Hub/Bearing</i>				
2 Sensor, Rear ABS	-See Rear Suspension Section			
<i>#Serviced w/Hub/Bearing</i>				
Bracket, Front Sensor	R/L 18040481-0			3.72
3 Module, ABS				
w/Active Brake Control	03 25746913	m	1.4	795.83
	04 25758395	m	1.4	854.11
w/o Active Brake Control	03 25742476	m	1.4	726.82
Soft Ride Susp	04 25758391	m	1.4	854.11
Sport Susp	03 25746912	m		636.93
	04 25758393	m	1.4	854.11
4 Valve, Brake Modulator				
2003				
w/Active Brake Control	18046178	m	1.7	918.04
w/o Active Brake Control	18046087	m	1.7	1228.47
2004	25757791	m	1.7	995.79
5 Bracket, ABS Module	25733066			13.96

ABS/BRAKES Cont'd

6 Cylinder Assy, Brake Master	18046412	m	.9	244.64
7 Reservoir, Master Cylinder	18046711	m	1.2	73.77
8 Switch, Fluid Level	18029973	m		10.47
9 Cap, Reservoir	18060795			23.32
#Included w/Brake Master Cylinder Assy				
10 Booster, Brake	18046379	m	#2.5	407.04
#Includes R&R Brake Master Cylinder				

ELECTRONIC SUSPENSION COMPONENTS



001-19602

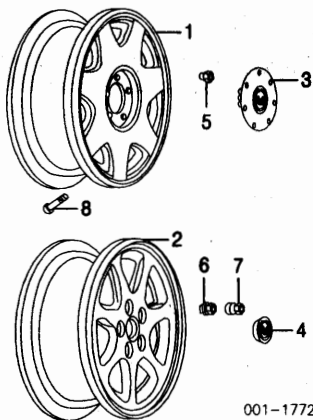
1 Accelerometer	03 25723944	m	#.4	517.83
	04 10307709	m	#.4	210.35
#w/Center Console Removed				
Connector, Accelerometer	15306009	m		#23.82
2 Sensor, Yaw	03 25737829	m	.8	333.19
Connector, Sensor	12117320	m		31.25

WHEEL

Use Procedure Explanation 10 with the following text.

ALLOY WHEEL 2003

Add to R&I Spare Wheel & Tire Assy..... 2

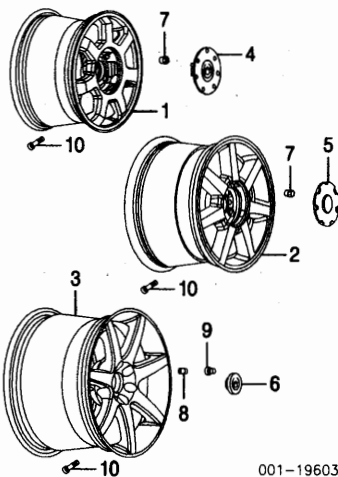


001-17728

<b>Wheel, Alloy</b>				
1 16x7"				
RPO-PF4	9594996	.3		530.03
RPO-PXO	9594998	.3		530.03
2 17x7-1/2"				
RPO-N93	9594568	.3		530.03
RPO-QF7	9595357	.3		520.15
<b>Cap, Center</b>				
3 16" Wheels				
RPO-PF4	9594997			16.14
RPO-PXO	9594999			40.37
4 17" Wheels				
RPO-PXO	9594569			5.42
<b>Nut, Lug</b>				
5 16" Wheels	9594681			3.92
6 17" Wheels	9594683			5.00
<b>Cap, Lug Nut</b>				
7 Stainless Steel	9593175			1.53
Stainless Steel Overlay	9593571			5.10
8 Stem, Valve	274288			1.85

ALLOY WHEEL 2004

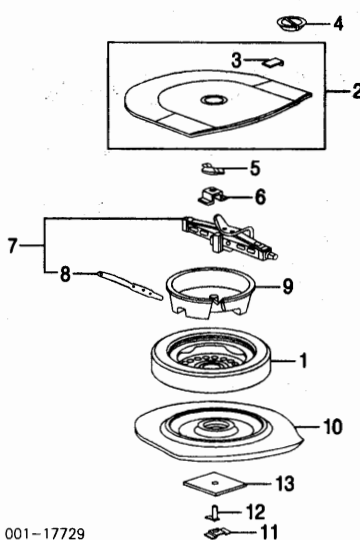
Add to R&I Spare Wheel & Tire Assy..... 2



001-19603

<b>Wheel, Alloy</b>				
1 16x7"				
RPO-PF4	9594996	.3		530.03
RPO-PXO	9594998	.3		530.03
2 17x7-1/2"				
RPO-N93	9594373	.3		530.03
RPO-QF7	9595339	.3		530.03
3 18x8-1/2"				
RPO-QF7	9595354	.3		632.15
<b>Cap, Center</b>				
4 16" Wheels				
RPO-PF4	9594997			16.14
RPO-PXO	9594999			40.37
5 17" Wheels				
RPO-N93	9594374			25.66
RPO-QF7	9595345			41.80
6 18" Wheels				
RPO-QF7	9594376			29.50
<b>Nut, Lug</b>				
7 16", 17" Wheels	9594681			3.92
8 18" Wheels	9594683			5.00
<b>Cap, Lug Nut</b>				
9 18" Wheels	9593175			1.53
10 Stem, Valve	274288			1.85

SPARE WHEEL & HARDWARE



001-17729

1 Wheel, Spare				
Compact	9593686			108.90
Full Size				
16x7"				
RPO-PF4	9594996			530.03
RPO-PXO	9594998			530.03
17x7-1/2"	03 9594568			530.03
	04 9594373			530.03
#Order by Application				
2 Cover Assy, Spare Wheel	25738962			221.86
3 Label, Spare Wheel Info	25695289			14.00
#Included w/Spare Wheel Cover Assy				
4 Retainer, Cover	14103857			7.11
5 Retainer, Jack	25718732			7.73
6 Washer, Jack Retainer	25718733			8.33
7 Jack Assy	25740573			63.03
8 Handle, Jack	25743725			15.74
#Included w/Jack Assy				
9 Container, Jack				
16" Spare	25745834			34.05
17" Spare	25666856			19.55

10 Support, Spare Wheel

2003				
Alloy Spare	25737969			42.87
Steel Spare	25759065			41.20
2004	25759065			41.20
11 Bracket, Spare Wheel-See Rear Body Section				16.14
12 Bolt, Spare Wheel	11519583			
13 Insulator, Spare Wheel	25742537			3.51

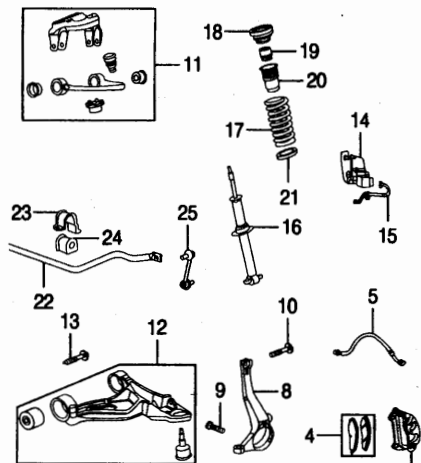
FRONT SUSPENSION

Use Procedure Explanation 11 with the following text.

R&I Suspension (One Side).....	R/Lm	2.2
O/H Suspension (Includes R&I)		
One Side.....	R/Lm	3.3
Both Sides.....	m	6.2
Adjust Four Wheel Alignment.....	m	1.6
Adjust Front Wheel Alignment.....	m	1.2
Bleed Brake System.....	m	5

NOTE 1: R&R/R&R or O/H Does Not include alignment or bleed brake system.

NOTE 2: All Parts in this section are included in overhaul unless noted otherwise.



001-19604

<b>1 Rotor, Brake</b>				
CTS				
Soft Ride Susp	R/L 18060682	m	#.6	132.70
Sport Susp	R/L 18060686	m	#.6	#167.27
CTS-V	R/L 25750248	m	#.6	132.70
#R&R Both 1.0				
#As Required				
<b>2 Bolt, Rotor</b>				
CTS-V	R/L 18061049	m		3.65
<b>3 Caliper, Brake</b>				
CTS	R/L 88959949-8	m	#.5	190.27
CTS-V	R 89047727	m	#.5	190.27
	L 89047726	m	#.5	0.00
#R&R Both .8, w/Brake Rotor Removed Deduct .3				
<b>Bracket, Caliper</b>				
CTS	R/L 88959945	m		49.39
<b>4 Pad Set, Brake</b>				
CTS				
Soft Ride Susp	88959947	m	#1.0	#132.99
Sport Susp	88959954	m	#1.0	#101.50
CTS-V	89047725	m	#1.0	#152.18
#Deduct .5 w/Each Brake Caliper Removed				
<b>5 Hose, Brake</b>				
	R 25761441	m	#.3	37.79
	L 25761442	m	#.3	38.16
#w/Brake Caliper Removed Deduct .2				
<b>6 Hub/Bearing</b>				
CTS	R/L 12413071	m	#.9	236.14
#Includes R&R Brake Rotor, R&R Both 1.6				
<b>7 Bracket, Front Sensor-See ABS/Brakes Section</b>				
CTS	R/L 18040503-2	m	#1.3	221.58
#Includes R&R Brake Rotor & Hub w/Bearing, R&R Both 2.4				
<b>8 Bolt, Hub</b> (a)				
CTS	R/L 18060469	m		3.65
#Order by Application				
(a) As Required				
<b>10 Bolt, Knuckle</b>				
CTS	R/L 11515780	m		3.84
<b>11 Arm, Upper Control</b>				
03 R	25760096	m	1.6	212.70
L	25760100	m	1.6	211.91
04 R	25741035	m	1.8	213.82
L	25752924	m	1.6	212.70
R	25736436	m	#1.0	319.16
L	25758282	m	#1.0	319.16
#Order by Application				
#w/Steering Knuckle Removed Deduct .6				
<b>13 Bolt, Lwr Cont Arm (2/Side)</b>				
CTS	R/L 11518694	m		3.65
<b>14 Sensor, Front Height</b>				
CTS	R/L 25710095	m	#.5	134.28
<b>15 Harness, Sensor</b>				
CTS	R/L 25722303	m	#	44.28
#Not Included in O/H				
<b>16 Strut, Front</b>				
2003				

Table listing suspension components like Soft Ride Susp, Sport Ride Susp, Spring, Coil, Insulator, Bumper, Shock, Retainer, Link, Stabilizer with part numbers and prices.

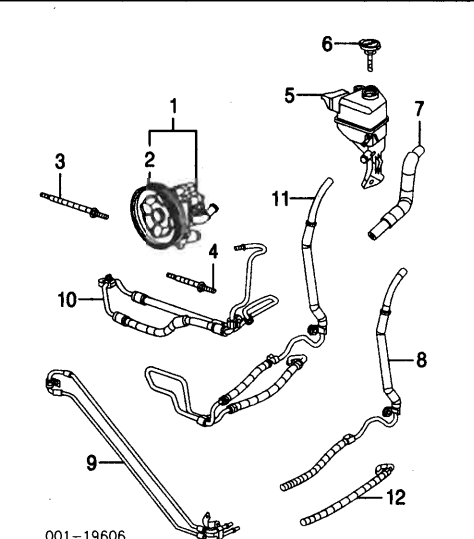


Table listing leather and wood/leather upholstery options with part numbers and prices.

FRONT STEERING LINKAGE/GEAR

R&I Steering Gear.....m 2.3
NOTE: R&R&R Does Not include check or adjust alignment.

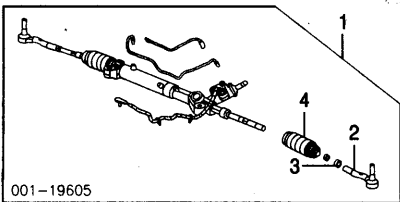


Table listing steering gear and tie rod components with part numbers and prices.

3.6L ENG section containing a diagram of the steering pump assembly and a parts list for pump, pulley, belt, reservoir, hoses, and cooler.

COLUMN

Diagram of a steering column assembly with numbered parts and a corresponding parts list.

Table listing column assembly components like Column Assy, Cover Kit, Harness, Upper/Lower, Spring, Seat, Switch, Module, Ignition, Shaft, Sphere Kit, and Sensor.

STEERING PUMP

3.2L ENG

Illustration Located in Next Column

Table listing steering pump components with part numbers and prices.

5.7L ENG

Table listing steering pump components for 5.7L engine with part numbers and prices.

STEERING WHEEL/COLUMN

NOTE: All Parts in this section are included in overhaul unless noted otherwise.

WHEEL & TRIM

Diagram of a steering wheel and air bag assembly with numbered parts and a parts list.

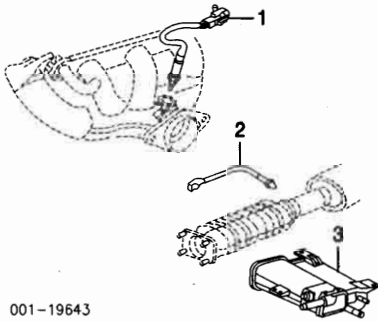
ENGINE/TRANS

Use Procedure Explanation 12 with the following text.

Table listing engine/trans components with part numbers and prices.



**EMISSION SYSTEM**

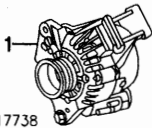


001-19643

<b>1 Sensor, Front Oxygen</b>					
3.2L Eng	R/L 24402859	m #5	75.27		
3.6L Eng	R/L 12575658	m #5	116.80		
5.7L Eng	R/L 12573005	m #5	116.80		
<b>2 Sensor, Rear Oxygen</b>					
3.2L Eng	R/L 24402860	m #5	83.64		
3.6L Eng	R/L 12575657	m #5	111.65		
5.7L Eng	R/L 12575389	m #5	60.90		
*Order by Application					
#Each Additional Add .3					
<b>3 Canister, Vapor</b>					
	17114052	m #2.7	108.73		
#w/Exhaust System Removed					

**ELECTRICAL**

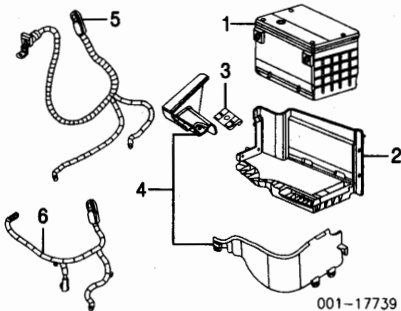
**ALTERNATOR**



001-17738

<b>1 Alternator</b>					
3.2L Eng	25738783	m 1.7	446.60		
3.6L Eng	25756439	m 1.7	446.60		
5.7L Eng	25750935	m 1.7	517.65		
Belt, Drive-See Cooling Section					

**BATTERY**



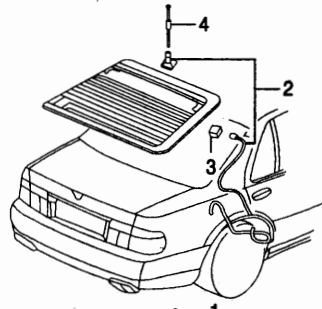
001-17739

<b>1 Battery</b>	N.A.	.3	0.00		
<b>2 Tray, Battery</b>	25771338	#2	37.91		
#w/Battery & Air Inlet Panel Removed					
<b>3 Retainer, Battery</b>	25558374		5.44		
<b>4 Shield, Upper Heat</b>	25737013		23.46		
<b>5 Cable, Positive</b>					
3.2L Eng	25736491	#8	79.06		
3.6L Eng	25767012	#8	114.09		
5.7L Eng	25754454	#8	0.00		
<b>6 Cable, Negative</b>					
3.2L Eng	03 25742031	#7	36.68		
	04 25759587	#7	24.93		
3.6L Eng	25767013	#7	51.77		
5.7L Eng	25754453	#7	0.00		
#R&R Both 1.2					

**COMMUNICATIONS SYSTEM**

Illustration Located in Next Column

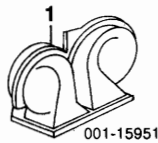
<b>1 Module, Comm</b>	N.A.	m .5	0.00		
*Serviced by AC-Delco Only, Contact Dealer					
<b>2 Cable, Antenna</b>	25724827	m	69.04		



001-17742

<b>3 Coupling, Lower</b>	12451032	m #4	35.42		
<b>4 Antenna, Telephone</b>	12451015	m #7	45.56		
#R&R Both .9					
<b>Module, Radio Antenna</b>	12233252	m .8	169.30		

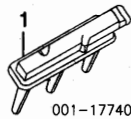
**HORN**



001-15951

<b>1 Horn</b>					
High Note	12368061	#2	49.87		
Low Note	12368062	#2	57.34		
#w/Front Air Deflector Removed					

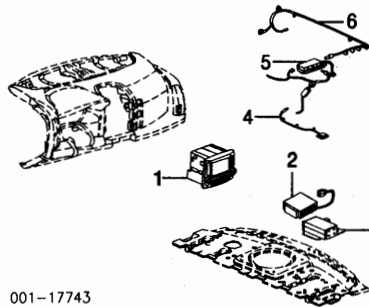
**IGNITION**



001-17740

<b>1 Coil, Ignition</b>					
3.2L Eng	R 90584336	m #1.2	103.10		
	L 90584337	m #9	103.10		
#R&R Both 1.8					
3.6L Eng (3/Side)	R 12583514	m #2.0	50.55		
	L 12583514	m #1.4	50.55		
5.7L Eng (4/Side)	R 12558948	m #2.0	60.62		
	L 12558948	m #1.4	60.62		
#R&R Both 2.8					

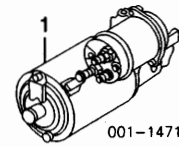
**NAVIGATION SYSTEM**



001-17743

<b>1 Display, Information</b>	*See Instrument Panel Section				
*Serviced w/Radio					
<b>2 Tuner, TV</b>	25739770	m #5	960.51		
<b>3 Receiver, Traffic Info</b>	N.A.	m #5	0.00		
#R&R Both .7					
<b>4 Antenna, Navigation</b>	25726417	m #4	91.35		
#w/Instrument Panel Removed					
<b>5 Module, Radio Antenna</b>	12233252	m .5	169.30		
<b>Cable, Navigation Antenna</b>	R/L 25726776-7	m	66.60		
<b>6 Cable, Radio Antenna</b>	25706700	m	29.23		

**STARTER**



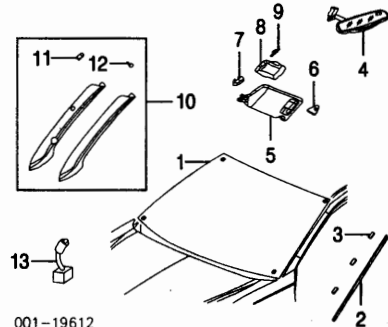
001-14713

<b>1 Starter</b>					
3.2L Eng	9224109	m 1.0	244.00		
3.6L Eng	10465587	m 1.3	R223.30		
5.7L Eng	89017491	m 1.3	R289.44		

**WINDSHIELD**

Use Procedure Explanation 13 with the following text.

Refinish Side Reveal Moulding	R/L	.4		
R&I Windshield		#2.9		
#Includes Clean Up Old Adhesive as Necessary				



001-19612

<b>1 Glass, Windshield</b>					
Cadillac	25739152	#2.5	1047.29		
NAGS	DW01479GBY	#2.5	1825.65		
#Includes Clean Up Old Adhesive as Necessary					
<b>Adhesive</b>	N.A.		0.00		
<b>2 Moulding, Side Reveal (P)</b>	R/L 25680779-80	.2	40.10		
(P) Paint to Match					
<b>3 Clip, Moulding (3/Side)</b>	R/L 25709577		3.92		
<b>4 Mirror, Rear View</b>					
w/Light Sensitive					
w/On-Star	25743654	.2	197.50		
w/o On-Star	25713432	.2	130.26		
w/o Light Sensitive	25603373	.2	56.56		
<b>5 Visor, Sun</b>					
w/GDO	R 88952122	.3	126.58		
	L 88952128	.3	232.03		
w/o GDO	R 88952122	.3	126.58		
	L 88952125	.3	129.39		
<b>6 Holder, Visor</b>	R 88952147		12.19		
	L 88952150		12.19		
*Order by Application					
<b>7 Reinforcement, Visor</b>	R/L 21031302		14.89		
<b>8 Lens, Visor Lamp</b>	R/L 88952168		6.68		
<b>9 Bulb, Visor (2/Side)</b>	R/L N.A.		0.00		
<b>10 Moulding Assy, Side Garnish</b>					
w/Speaker					
Black	04 R/L 25758034-5	#3	109.26		
Neutral	04 R 25758036	#3	109.26		
	L 25772253	#3	108.28		
w/o Speaker					
Gray	R/L 88892072-3	#3	76.98		
Neutral	R/L 88892074-5	#3	76.98		
<b>11 Clip, Moulding (a)</b>	R/L 11588471		3.65		
<b>12 Screw, Moulding (a)</b>	R/L 25619491		3.84		
*Included w/Side Garnish Moulding Assy					
(a) As Required					
<b>13 Speaker, Side Midg</b>					
w/Bose Speaker System	R/L 25664912	#3	24.01		
w/o Bose Speaker System	R/L 9354879	#3	32.61		
#R&R One Side Complete					

**WIPER SYSTEM**

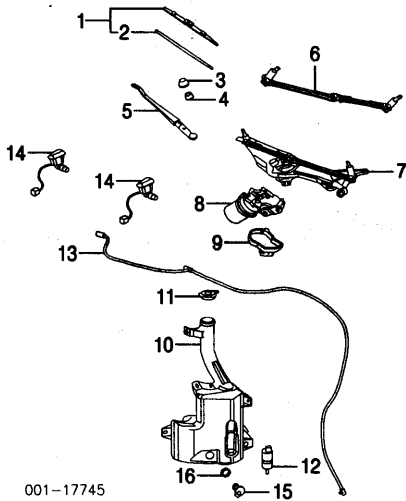
Illustration Located in Next Column

<b>1 Blade Assy, Wiper</b>	R 12487638	.1	18.92		
	L 12487636	.1	18.92		
<b>2 Insert, Wiper</b>	R 88892785	.1	16.40		
	L 12367281	.1	10.50		
*Included w/Wiper Blade Assy					
<b>3 Cover, Nut</b>	R/L 12487644		23.60		
<b>4 Nut, Wiper Arm</b>	R/L 11514597		3.95		
<b>5 Arm, Wiper</b>	R 12335744	#2	63.36		
	L 12487635	#2	62.44		
#Includes R&R Wiper Blade Assy					
<b>6 Trans, Wiper</b>	88958117	#5	85.17		



**WINDSHIELD Cont'd**

**WIPER SYSTEM Cont'd**

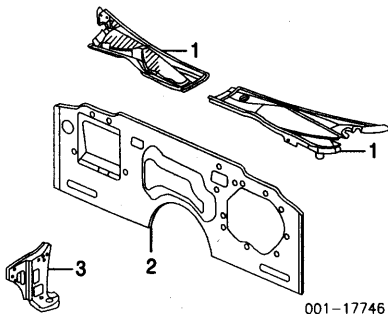


001-17745

7	Module, Wiper	12487631	#3	109.65
8	Motor, Wiper #w/Air Inlet Panels Removed	12487632	#5	400.78
9	Cover, Motor	88958118		159.92
10	Reservoir, Washer w/ H/Lamp Washers w/o H/Lamp Washers #w/Front Air Deflector Removed	88958120 88958119	#3 #3	217.32 137.98
11	Cap, Reservoir	25731418		5.82
12	Pump, Washer H/Lamp Windshield	88958121 12487643	68.14 68.09	
13	Hose, Washer Pump] #Cut to Fit	N.A.		0.00
14	Nozzle, Washer #Includes R&R Hood Insulator, Included in R&R Hood	R/L 25725639	#4	33.68
15	Switch, Fluid Level	12487599		34.40
16	Seal, Level Switch	12487588		9.21

**COWL & DASH**

Use Procedure Explanations 14 and 28 with the following text.



001-17746

1	Panel, Air Inlet #Includes R&R Right Air Inlet Panel	R 25765426 L 25767759	.2 #4	71.19 66.10
2	Panel, Dash-Not Serviced			
3	Panel, Lower Side Cowl	R/L 88891096-7		71.34

**INSTRUMENT PANEL**

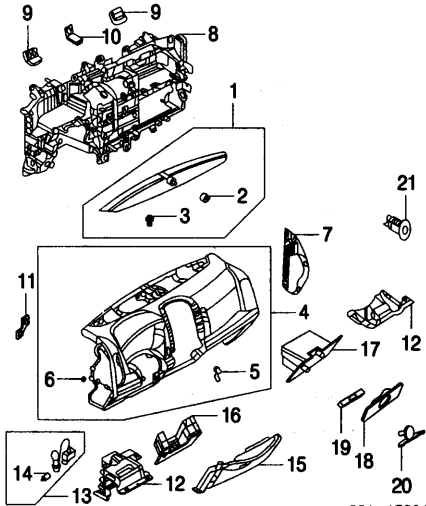
Use Procedure Explanation 14 with the following text.

R&I Instrument Panel Assy	m	#4.5
#Includes R&I Center Console Assy & Steering Column		
R&I Instrument Panel Carrier	m	#5.5
#Includes R&I Center Console Assy, Instrument Panel Assy & Steering Column		

NOTE: All Parts in this section are included in R&I Instrument Panel Carrier unless noted otherwise.

Illustration Located in Next Column

1	Panel Assy, Upper Trim w/Bose Speaker System			
---	---	--	--	--

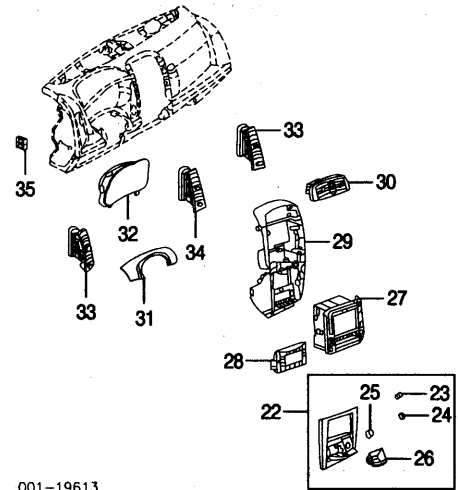


001-17804

Black	25749921	.2	121.82
Pewter	25738993	.2	121.82
w/o Bose Speaker System			
Black	25749922	.2	121.82
Pewter	25738994	.2	121.82
2 Retainer, Grille(8)	22570333	.70	
3 Sensor, Auto Headlamp	25713063	.3	22.35
#Included w/Upper Trim Panel Assy			
4 Panel Assy, Instrument	25749636	m	#5.0 1156.76
Black			
Gray			
1st Design	25746872	m	#5.0 1153.30
2nd Design	25769946	m	#5.0 1156.76
Neutral			
1st Design	25746874	m	#5.0 1129.58
2nd Design	25769948	m	#5.0 1156.76
#Includes R&I Center Console Assy & Steering Column			
5 Striker, Comp Latch	25736546		5.28
6 Nut, Inst Panel(5)	11516993		.58
#Included w/Instrument Panel Assy			
Module, Pass Air Bag-See Air Bag System Section			
7 Panel, Side Trim			
Black	R 25749647	.1	36.47
	L 25749646	.1	36.81
Pewter	R 25728539	.1	47.02
	L 25728536	.1	47.02
8 Carrier, Inst Panel	25667204	#6.0	792.08
#Includes R&I Center Console Assy & Steering Column & R&R Instrument Panel Assy			
9 Bracket, Outer Carrier	R/L 25676226		27.68
10 Bracket, Upper Carrier	25687278		27.68
Bracket, Lower Carrier	25676228		27.68
11 Bracket, Inst Panel	R/L 25714893-2		5.82
12 Insulator, Panel	R/L 25703990-89	.2	39.14
13 Lamp Assy, Courtesy	R/L 3525213		8.27
14 Bulb, Lamp	R/L 9433102		2.80
#Included w/Courtesy Lamp Assy			
15 Bolster, Knee			
Black	25749638	#3	64.56
Gray			
1st Design	25733610	#3	65.02
2nd Design	25758844	#3	64.56
Neutral			
1st Design	25733611	#3	65.02
2nd Design	25758845	#3	64.56
Pewter	25733609	#3	65.02
#w/Panel Insulator Removed			
16 Absorber, Energy	25703807		61.68
17 Box, Glove	25703815	#2	89.93
#w/Glove Box Door Removed			
18 Door, Glove Box			
Black	25749640	#4	192.68
Gray	25771235	#4	192.68
Neutral	25771236	#4	192.68
Pewter	25733603	#4	192.68
19 Hinge, Glove Box	25705396	#4	49.98
20 Handle, Glove Box			
Black	88983991	#4	27.40
Gray	25736544	#4	27.40
Neutral	25736545	#4	27.40
Pewter	25736543	#4	27.40
21 Cylinder, Glove Box Lock	89022664	#4	20.27
#R&R Complete			

Illustration Located in Next Column

22	Panel Assy, Lower Trim 2003 w/Lighter			
	1st Design	25749340	.2	152.65
	2nd Design	25750259	.2	164.18
	w/o Lighter			



001-19613

1st Design	25703805	.2	164.02
2nd Design	25750258	.2	164.18
2004			
CTS			
w/Lighter	25758550	.2	274.76
w/o Lighter	25758549	.2	92.86
CTS-V	25750258	.2	164.18
23 Lighter	11516141		10.28
24 Plug, Accessory Power	12385528		1.07
25 Retainer, Lighter	11516144		.63
26 Compartment, Lower			
w/Lighter	25703815		89.93
w/o Lighter	25716163		86.41
Ashtray	25716165		28.29
#Included w/Lower Trim Panel Assy			
27 Radio (a)	N.A.	.6	0.00
(a) Serviced by AC-Delco Only, Contact Dealer			
28 Control, Heater/ A/C 2003			
w/Seat Heater			
1st Design	25751076	m	.4 828.86
2nd Design	25752261	m	.4 828.86
w/o Seat Heater			
1st Design	25751077	m	.4 671.58
2nd Design	25752262	m	.4 671.58
2004			
w/Seat Heater	25771622	m	.4 472.80
w/o Seat Heater	25771623	m	.4 472.80
#Order by Application			
29 Extension, Lower			
Black	25749981	#8	126.04
Pewter	25714898	#8	126.04
#Includes R&R Radio & Heater/A/C Control			
30 Plate, Accessory Trim w/Towing Pkg (RPO-V92)	25740828	.1	107.75
w/o Towing Pkg (RPO-V92)			
1st Design	25703804	.1	93.64
2nd Design	25749919	.1	109.88
31 Plate, Cluster Trim			
Black	25749976	.2	32.30
Pewter	25703822	.2	32.28
32 Cluster, Instrument	N.A.	m	.5 0.00
#Serviced by AC-Delco Only, Contact Dealer			
33 Deflector, Outer Air			
Black	R/L 25749973-2	.2	38.95
Pewter	R 25703819 L 25703818	.2 .2	39.68 39.33
34 Deflector, Center			
Black	25749975	.2	54.12
Pewter	25704091	.2	44.40
35 Sensor, Air Temp	25687484		19.14

**CENTER CONSOLE**

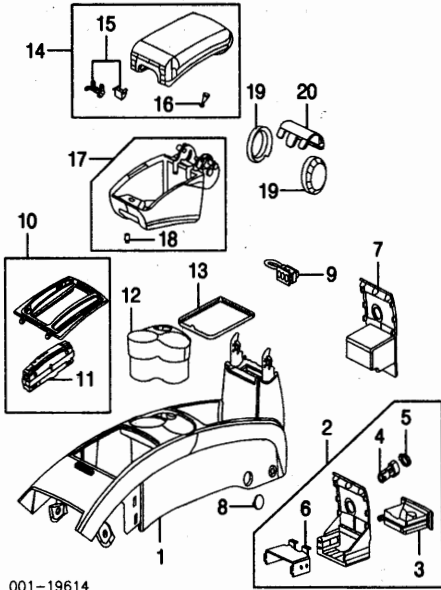
Use Procedure Explanation 14 with the following text.

R&I Center Console Assy		.4
-------------------------	--	----

NOTE: All Parts in this section are included in R&R Console unless noted otherwise.

Illustration Located in Next Column

1	Console, Center (a) Man Trans	25748147	1.0	161.47
	Auto Trans			
	w/Ashtray	25748148	1.0	161.47
	w/o Ashtray	25740593	1.0	159.40
(a) Order by Application				
2	Panel Assy, Rear Console w/Ashtray			
	Black			
	CTS	25750153	.3	52.16
	CTS-V	25759201	.3	52.16
	Pewter	25737742	.3	52.16

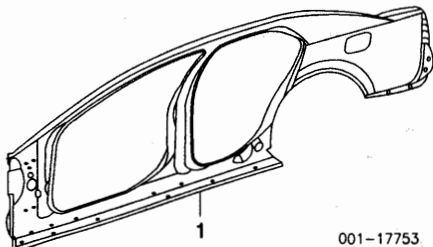


001-19614			
3 Door, Ashtray	25737751		13.11
4 Outlet, Accessory Power	12450044		6.86
5 Retainer, Power Outlet	15187371		3.81
6 Spring, Ashtray Guide	25737736		3.66
#Included w/Rear Console Panel Assy			
7 Panel, Rear Console w/o Ashtray (a)	25737743	.4	51.14
(a) Order by Application			
8 Cover, Console Bolt (2/Side)			
Black	R/L 25748146		3.70
Gray	R/L 25731552		3.96
Neutral	R/L 25731554		3.96
Pewter	R/L 25731553		3.88
9 Harness, Audio/Video	25666549		39.04
10 Bezel Assy, Shift Indicator (a)			
Auto Trans	25750674	.2	106.56
(a) Order by Application			
11 Indicator, Shift	25727784		121.65
#Included w/Shift Indicator Bezel Assy			
12 Holder, Cup	25737723		17.79
13 Liner, Compartment	25737724		13.95
14 Armrest Assy, Console (a)			
Black	25750148	#.3	89.56
Pewter	25737726	#.3	90.37
(a) Order by Application			
15 Latch, Console			
2003			
1st Design	25737727		13.95
2nd Design	25750149		13.82
2004	25750149		13.82
16 Spring, Console Latch	25737728		5.18
#Included w/Console Armrest Assy			
17 Tray Assy, Console			
Black	25759213	#.3	174.60
Pewter	25737734	#.3	135.54
#R&R Complete			
18 Bumper, Console Armrest	R/L 25737735		- 3.96
#Included w/Console Tray Assy			
19 Cover, Side Hinge			
Black	R/L 25750152		40.11
Pewter	R/L 25737729		40.04
20 Cover, Upper Hinge			
Black	25750151		40.11
Pewter	25740434		38.09

**ROCKER/PILLARS/FLOOR**

Use Procedure Explanations 14, 15 and 28 with the following text.

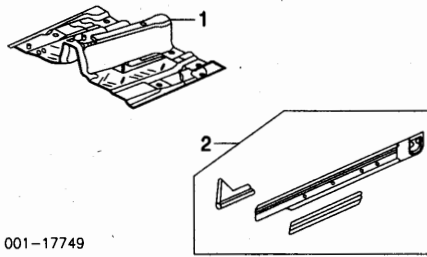
**ROCKER/PILLARS**



1 Frame Assy, Outer Side Body-See Side Body Section

001-17753

**FLOOR**



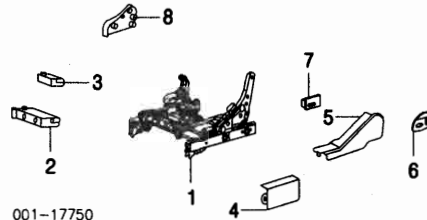
001-17749

- 1 Panel, Floor-Not Serviced
- 2 Panel, Inner Rocker R/L 25697234-5 s 4.0 102.54

**FRONT SEAT**

Use Procedure Explanation 30 with the following text.

R&I Seat Assy.....R/L .3



001-17750

- 1 Adjuster, Seat
  - Passenger Side
    - Manual 88895464 #.7 558.86
    - Power 88995062 #.7 581.21
  - Driver Side w/Memory 88895480 #.7 1235.94
  - w/o Memory 88995061 #.7 432.58
- #w/Seat Assy Removed
- 2 Module, Seat Memory
  - Driver Side 25739645 164.71
- 3 Module, Seat Heater
  - Passenger Side 25737275 62.02
  - Driver Side 25737275 62.02
- 4 Cover, Outer Adjuster
  - Passenger Side
    - Black 88992626 3.77
    - Gray 88895391 3.77
    - Neutral 88895389 3.77
    - Pewter 88895390 3.77
  - Driver Side
    - Black 88992625 3.91
    - Gray 88895388 4.00
    - Neutral 88895386 4.00
    - Pewter 88895387 3.87
- 5 Cover, Outer Recliner
  - Passenger Side
    - Black 88994102 15.32
    - Gray 88895371 6.32
    - Neutral 88897633 11.98
    - Pewter N.A. 0.00
  - Driver Side
    - Black 88992619 11.96
    - Gray 88949021 11.96
    - Neutral 88897677 11.96
    - Pewter 88949020 11.96

- 6 Bezel, Adj Switch
  - Passenger Side
    - Black 88992624 3.77
    - Gray 88895399 3.77
    - Neutral 88895397 3.77
    - Pewter 88895398 3.77
  - Driver Side
    - Black 88992623 3.77
    - Gray 88895395 3.77
    - Neutral 88895393 3.77
    - Pewter 88895394 3.77
- 7 Switch, Adjuster
  - Passenger Side 12450264 38.68
  - Driver Side 12450263 38.68
- 8 Cover, Inner Recliner
  - Passenger Side
    - Black N.A. 0.00
    - Gray 88895371 6.32
    - Neutral 88895369 6.32
    - Pewter 88895370 6.32
  - Driver Side
    - Black N.A. 0.00
    - Gray 88895367 6.32
    - Neutral 88895365 6.32
    - Pewter 88895366 6.32

**REAR SEAT**

Use Procedure Explanation 30 with the following text.

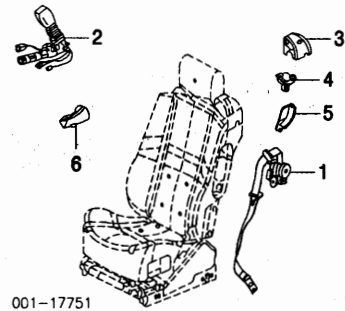
- R&I Seat Cushion ..... 2
- R&I Seat Back..... #1.1

#Includes R&I Seat Cushion

**SEAT BELTS**

Use Procedure Explanation 30 with the following text.

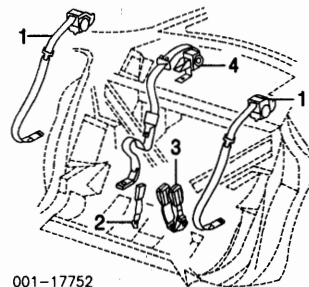
**FRONT**



001-17751

- 1 Belt, Seat
  - Passenger Side
    - Black 88957484 #1.4 121.09
    - Gray 88952534 #1.4 122.64
    - Neutral 88952536 #1.4 123.74
    - Pewter 88952535 #1.4 122.64
  - Driver Side
    - Black 88957483 #1.4 121.09
    - Gray 88952474 #1.4 122.64
    - Neutral 88952476 #1.4 122.64
    - Pewter 88952475 #1.4 122.64
- 2 Buckle, Seat Belt
  - Passenger Side
    - Black 88957544 #.6 96.70
    - Gray 88956934 #.6 98.27
    - Neutral 88956935 #.6 96.70
    - Pewter 88955031 #.6 96.70
  - Driver Side
    - Black 88957543 #.6 100.44
    - Gray 88956945 #.6 100.44
    - Neutral 88956946 #.6 98.27
    - Pewter 88955028 #.6 100.44
- #Includes R&I Front Seat
- 3 Cover, Belt Opng Bezel
  - Passenger Side 88897615 5.37
  - Driver Side 88897614 5.31
- 4 Roller, Shoulder Belt
  - Passenger Side 88897641 #1.4 44.35
  - Driver Side 88897640 #1.4 44.35
- #Includes R&I Front Seat
- 5 Bezel, Upper Belt
  - Passenger Side 88897619 3.88
  - Driver Side 88897618 3.88
- 6 Bezel, Lower Belt
  - Passenger Side
    - Black 88895385 7.79
    - Gray 88895383 7.79
    - Neutral 88895384 3.88
  - Driver Side
    - Black 88895381 7.79
    - Gray 88895379 7.79
    - Pewter 88895380 7.79
- #Order by Application

**REAR**



001-17752

- 1 Belt, Side Seat
  - Black R/L 88955968-9 #1.6 67.69
  - Gray R 88955021 #1.6 66.24
  - L 88955024 #1.6 67.09
  - Neutral R 88955023 #1.6 67.69
  - L 88955026 #1.6 67.69
  - Pewter R 88952306 #1.6 67.69
  - L 88952309 #1.6 67.69
- #Includes R&I Seat Back & R&I/R&R Package Tray Trim
- 2 Buckle, Right Seat Belt
  - Black 88955960 #.2 58.86
  - Gray 88952311 #.2 58.86
  - Neutral 88952313 #.2 58.86

**SEAT BELTS Cont'd**

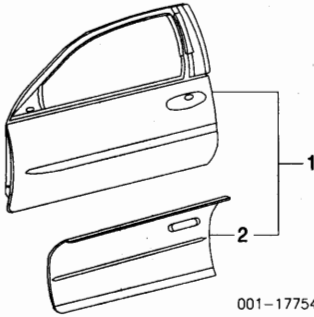
REAR Cont'd			
3	Pewter Buckle Set, Seat Belt]	88952312	#.2 58.86
	Black	L 88955962	#.4 58.86
	Gray	L 88952317	#.4 58.86
	Neutral	L 88952373	#.4 58.86
	Pewter	L 88952372	#.4 58.86
#Includes R&I Rear Seat Cushion			
4	Belt, Center Seat]		
	Black	88955966	#1.6 58.86
	Gray	88952302	#1.6 65.65
	Neutral	88952301	#1.6 67.69
	Pewter	88952303	#1.6 65.65
}Order by Application			
#Includes R&I Seat Back & R&I/R&R Package Tray Trim			

**FRONT DOOR**

Use Procedure Explanations 16 and 28 with the following text.

**SHEET METAL**

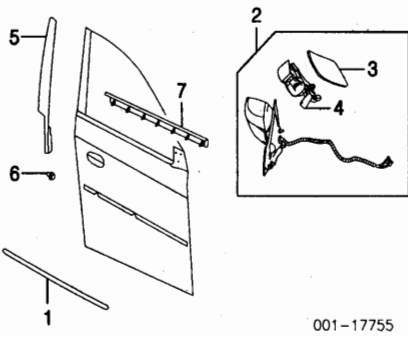
Refinish Door Outside.....	R/L	2.1
Add for Jambas & Interior.....	R/L	1.0
Add for Jambas.....	R/L	.5
R&I Door Assy.....	R/L	.5



1	Shell Assy, Door	R/L 88890954-3	#5.0 547.63
#Includes R&I/R&R Mirror Assy			
2	Panel, Door Repair]	R/L 25737913-4	#6.0 248.24
}Included w/Door Shell Assy			
#Includes R&I/R&R Mirror Assy & Front Door Glass			

**EXTERIOR TRIM**

Refinish Side Door Moulding.....	R/L	.4
Refinish Mirror Assy.....	R/L	.7
R&I Mirror Assy.....	R/L	#.6
R&I Door Applique.....	R/L	#.7
#Includes R&I Trim Panel		
R&I Outer Belt Moulding.....	R/L	#.8
#Includes R&I Trim Panel & R&I/R&R Mirror Assy		



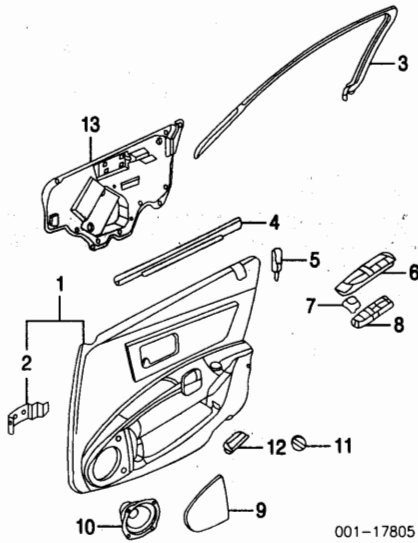
1	Moulding, Side Door (Adhesive) (P)	R/L 25664508	.2 43.28
2	Mirror Assy (P)		
	Man Folding	03 R/L 25765008-9	#.2 189.50
		04 R/L 25765008-9	#.2 189.50
	Pwr Folding	03 R/L 25707337-8	#.2 439.51
		04 R/L 25765010-1	#.2 0.00
(P) Paint to Match			
#w/Trim Panel Removed			
3	Glass, Mirror] (a)		
	w/Etched Warning (RPO-Z5Y)	R/L 88892695-4	.3 173.90
	w/o Etched Warning (RPO-Z5Y)	R/L 88892696-7	.3 173.90
(a) Order by Application			
4	Motor, Mirror]	R/L 88980591	#.5 56.60
#Included w/Mirror Assy			
#Includes R&I/R&R Mirror Glass			
5	Applique, Door (a)	R/L 25762419-20	#.3 25.14
(a) Order by Application			
#w/Trim Panel Removed			

6	Bolt, Applique Attaching (4/Side)	R/L 3539991	3.95
7	Midg, Outer Belt	R/L 25680763-4	#.2 35.31
#w/Mirror Assy Removed			

**INTERIOR TRIM**

R&I Trim Panel.....	R/L	.4
---------------------	-----	----

NOTE: All Parts in this section are included in R&R Trim Panel unless noted otherwise.

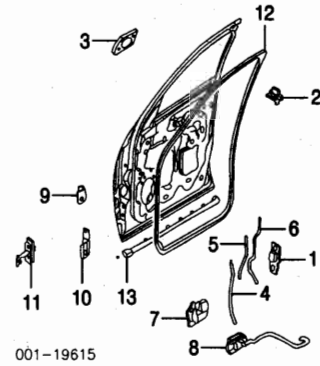


1	Panel Assy, Door Trim		
	Black	R/L 88983935-4	.6 406.19
	Gray		
	2003		
	1st Design	R 88981646	.6 685.04
		R 88981649	.6 685.04
	2nd Design	R 88983979	.6 406.19
		R 88983981	.6 406.19
	2004	R 88981646	.6 685.04
		L 88981649	.6 685.04
	Neutral		
	2003		
	1st Design	R 88981648	.6 685.04
		R 88981651	.6 714.82
		R 88983980	.6 406.19
		R 88983982	.6 406.19
		R 88981648	.6 685.04
		L 88981651	.6 714.82
		03 R 88981647	.6 685.04
		L 88981650	.6 685.04
	Pewter		
	2003		
	1st Design	R/L 25731973	4.70
	2nd Design	R/L 25743846	4.70
	2004	R/L 25743846	4.70
	Neutral		
	2003		
	1st Design	R/L 25731972	4.70
	2nd Design	R/L 25743847	4.70
	2004	R/L 25743847	4.70
	Pewter		
	2003		
	1st Design	R/L 25731971	4.70
	2nd Design	R/L 25743848	4.66
6	Plate, Switch Trim]	R/L 88952731	#.3 24.81
		L 88952729	#.3 24.81
7	Switch, Window Lock]	R/L 25727779-8	#.3 22.63
8	Switch, Window]	R/L 25748574	#.3 96.89
		L 25750262	#.3 100.51
}Order by Application			
#R&R One Side Complete			
9	Grille, Speaker		
	Black	R/L 88983939	16.09
	Gray	R/L 88952717	16.09
	Neutral	R/L 88952719	16.09
	Pewter	R/L 88952718	16.09
10	Speaker, Door		
	w/Bose Speaker System	R/L 25684702	#.2 57.25
	w/o Bose Speaker System	R/L 25753395	#.2 38.15
#w/Trim Panel Removed, Not Included in R&R Trim Panel			
	Switch, Door Lock		
	Black	R/L 25750265	.2 13.32
	Pewter	R/L 25721241	.2 13.32
11	Switch, Trunk Release		
	Black	L 25750522	.2 18.12
	Gray	L 25721205	.2 18.12
	Neutral	L 25721203	.2 18.12
	Pewter	L 25721204	.2 18.12
12	Lamp, Courtesy	R/L 12482519	9.38

13	Shield, Moisture	R 25736880	# 15.00
		L 25736881	# 17.10
#w/Trim Panel Removed, Not Included in R&R Trim Panel			

**HARDWARE**

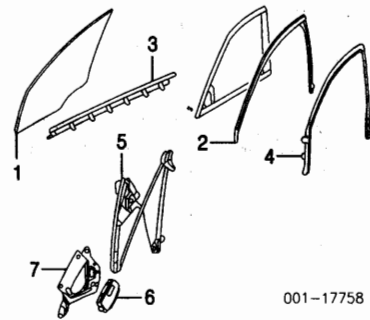
Refinish Outside Handle.....	R/L	.6
Refinish Upper Door Hinge.....	R/L	.3
Refinish Lower Door Hinge.....	R/L	.3
R&I Outside Handle.....	R/L	#.6
#Includes R&I Trim Panel		



1	Latch, Door	03 R 12451632	#.3 79.00
		L 25766249	#.3 86.44
		04 R 25759053	#.3 86.19
		L 25766249	#.3 86.44
#w/Trim Panel Removed			
2	Striker	R/L 12451555	.2 7.49
3	Handle, Outside (P)	R 25749402	#.3 64.47
		L 25749403	#.3 55.60
(P) Paint to Match			
4	Rod, Outside Handle Cylinder, Lock	R/L 25747416-7	3.54
	w/Theft Deterrent	L 88952180	#.3 45.51
	w/o Theft Deterrent	L 12458178	#.3 32.33
#w/Trim Panel Removed, R&R One Side Complete			
5	Rod, Lock Cyl	R 25747408	3.66
		L 25747409	3.63
6	Rod, Locking	R/L N.A.	0.00
7	Handle, Inside		
	CTS	R/L 25759728-9	#.2 27.65
	CTS-V	R/L 25759730-1	#.2 36.00
#w/Trim Panel Removed			
8	Rod, Inside Handle	R 25747424	3.61
		L 25747425	3.72
9	Hinge, Upper Door	R/L 25680444-3	#.3 22.29
10	Hinge, Lower Door	R/L 25680443-4	#.3 22.29
#w/Door Removed			
11	Check, Door	03 R/L 25680448	#.2 26.51
		04 R/L 25765478	#.2 22.80
#w/Trim Panel Removed			
12	W/Strip, Door Opng		
	Door Side	R/L 88952175	.4 49.40
	Body Side	R/L 88983968	.2 49.40
13	W/Strip, Lower	R/L 25745348-9	.2 20.40

**GLASS & PARTS**

R&I Aux Weatherstrip.....	R/L	#1.0
#Includes R&I Trim Panel & R&I/R&R Mirror Assy & Outer Belt Moulding		



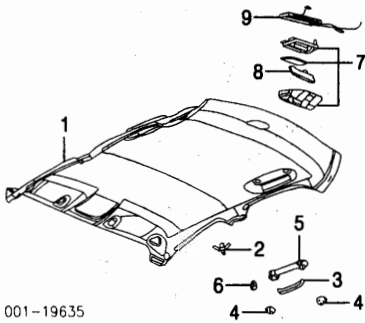
1	Glass, Front Door		
	Cadillac	R/L 25678461-2	1.2 484.31
	NACS		
	w/Attachments	R/L DD10125-6GTY	1.2 0.00
	w/o Attachments	R/L DD10125-6GTN	1.2 624.35
2	Weatherstrip, Aux	R 10349902	#.2 93.00
		L 25770751	#.2 93.83
#w/Mirror Assy & Outer Belt Moulding Removed			
3	Midg, Outer Belt-See Exterior Trim Section	R/L 25680747-8	54.78
4	W/Strip, Window	R/L 25678463-4	#1.0 267.69
5	Regulator, Window]		
	#Includes Motor		
#w/Front Door Glass Removed Deduct .8			
6	Module, Control		



**ROOF Cont'd**

**INTERIOR TRIM Cont'd**

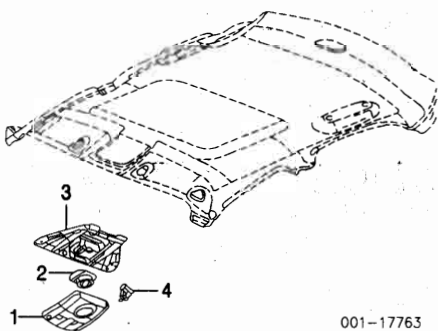
#Includes R&I Front Seat Assemblies, Rear Seat Assy & Roof Console



1 Headliner				
w/Sunroof	88955643	#4.5	674.95	
w/o Sunroof	88952135	#4.5	674.95	
*Order by Application				
#Includes R&I Front Seat Assemblies, Rear Seat Assy & Roof Console				
2 Retainer, Headliner (2/Side)	R/L 25698094		3.84	
3 Handle, Assist	R/L 88952118	.2	27.65	
4 Cover, Handle (2/Side)	R/L 88951937		6.37	
*Order by Application				
5 Bracket, Assist Handle				
w/Sunroof	R/L 88952103		8.70	
w/o Sunroof	R/L 88952102		8.70	
6 Hook, Coat	R/L 88952118	.1	27.65	
*Order by Application				
7 Lamp, Dome				
w/Intrusion Sensor				
Gray	88952105	.3	41.25	
Neutral	88952106	.3	41.25	
w/o Intrusion Sensor				
Gray	88952108	.3	41.25	
Neutral	88952109	.3	40.88	
8 Sensor, Intrusion				
Cloth Interior	25735888		114.03	
Leather Interior	25697492		114.03	
9 Module, Antenna	12233252		169.30	

**OVERHEAD CONSOLE**

R&I Overhead Console ..... 2

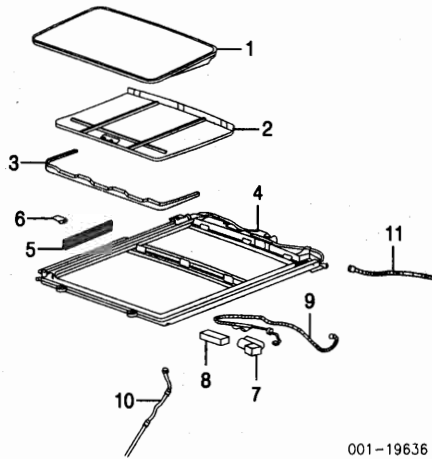


1 Bezel, Accessory Switch				
w/Sunroof				
Gray	88952114	#2	172.15	
Neutral	88952115	#2	168.44	
w/o Sunroof				
Gray	88952111	#2	168.44	
Neutral	88952112	#2	168.44	
2 Switch, Sunroof	25721185	#2	28.56	
*Order by Application				
#R&R Complete				
3 Bracket, Bezel	88952130		30.04	
4 Clip, Retainer (2)	22612024		1.98	

**SUNROOF**

R&I Sunroof Assy ..... #1.6  
#w/Headliner Removed

NOTE: All Parts in this section are included in R&R Sunroof Module unless noted otherwise.

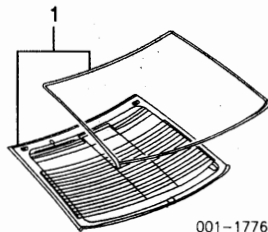


1 Glass, Sunroof	88892604	.5	1588.75
2 Sunshade			
Gray	88892606	.4	225.17
Neutral	88892605	.4	222.30
3 Deflector, Air	88892603	.3	151.10
4 Module, Sunroof	88892602	#2.0	1150.15
#w/Headliner Removed			
5 Cover, Side	R/L 88892607		29.97
6 Clip, Cover (3/Side)	R/L 88892608		6.02
7 Actuator, Sunroof	25707142		364.46
8 Module, Sunroof Control	25678002		134.04
9 Harness, Sunroof Wiring	25712362		261.85
10 Hose, Front Drain	R 25722026		16.15
L 25722027			16.83
11 Hose, Rear Drain	R/L 25664556		16.83

**BACK WINDOW**

Use Procedure Explanation 19 with the following text.

R&I Back Window Glass ..... #6.4  
#Includes Clean Up Old Adhesive as Necessary & R&I/R&R Headliner, Front Seat Assemblies, Rear Seat Assy & Roof Console



1 Glass, Back Window			
Cadillac			
w/On-Star	25749553	#6.0	874.51
w/o On-Star	25739154	#6.0	578.22
NAGS			
w/On-Star	DB10130GTY	#6.0	1900.00
w/o On-Star	DB10129GTY	#6.0	1630.00
*Order by Application			
#Includes Clean Up Old Adhesive as Necessary & R&I/R&R Headliner, Front Seat Assemblies, Rear Seat Assy & Roof Console			
Adhesive	N.A.		0.00

**SIDE BODY**

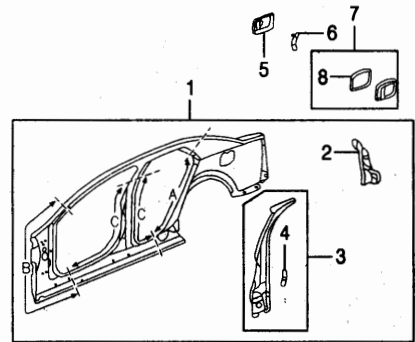
Use Procedure Explanations 14, 15, 20 and 28 with the following text.

**SHEET METAL**

Refinish Outer Side Body Frame Assy	R/L	5.3
Add for Pillar	R/L	.5
Add to Edge Panel	R/L	.5
Refinish Quarter Panel Outside	R/L	2.2
Add for Pillar	R/L	.5
Add to Edge Panel	R/L	.5
Refinish Hinge Pillar	R/L	1.0
Refinish Center Pillar & Rocker Panel	R/L	2.5
Refinish Fuel Filler Door		#4
#Included in Refinish Right Quarter Side Body Frame Assy or Right Quarter Panel		
Refinish Rear Window Drain Panel		1.0
Section Quarter Panel (A)	R	#19.5
L		#19.0
#Section Below Roof Line & in Rear Door Opening, w/Roof Removed Deduct 6.6, Deduction Includes Common & Included Operations		
Section Hinge Pillar (B)	R/L	#8.0

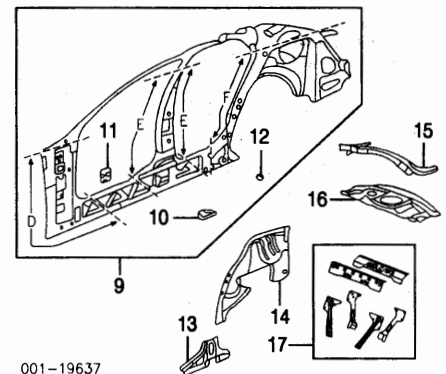
#Section in Windshield Opening & Front Door Opening	
Section Center Pillar & Rocker Panel (C)	R/L #15.5
#Section Below Roof Line & in Door Openings, w/Quarter Panel Removed Deduct 3.4, Deduction Includes Common Surfaces & Included Operations	
Section Inner Hinge Pillar (D)	R/L #5.0
#Section Below Windshield Opening & in Front Door Opening	
Section Inner Center Pillar & Rocker Panel (E)	R/L #7.0
#Section Below Roof Line & in Door Openings	
Section Outer Wheelhouse (F)	R/L #5.5
#Section above Wheelhouse & in Rear Door Opening	
R&R Both Quarter Panels	30.5
R&R Roof & Both Quarter Panels	
w/Sunroof	40.8
w/o Sunroof	38.8
R&R Rear Body Panel & Both Quarter Panels	32.5
R&R Roof, Rear Body Panel & Both Quarter Panels	
w/Sunroof	42.8
w/o Sunroof	40.8
Add to R&R Quarter Panel	
R&I Back Glass	.4

NOTE: Refer to Manufacturer's Service Manual for Quarter and Corner Panel replacement procedures.



001-17766

1 Frame Assy, Outer Side Body	R 88891829	s 26.0	1125.60
L 88891830		s 25.5	1125.60
2 Filler, Outer	R/L 25749670-1	#5	31.09
#w/Rear Body Panel Removed			
3 Panel Assy, Upper Pillar	R/L 25731936-7	s	137.15
4 Reinf, Outer Striker (a)	R/L 25740217		3.54
*Included w/Outer Side Body Frame Assy			
(a) Included w/Upper Pillar Panel Assy			
Valve, Pressure Relief	R/L 25739070	#1	12.07
#w/Rear Cover Removed			
5 Door, Fuel Filler	R 25744725	2	31.13
Housing, Fuel Filler	R 25757905		3.46
6 Hinge, Fuel Filler Door	R 25731075		0.00
7 Housing Assy, Fuel Filler	R 25761433		34.06
8 Gasket, Fuel Filler Opng	R N.A.		0.00
*Included w/Fuel Filler Housing Assy			



001-19637

9 Frame Assy, Inner Side Body	R/L 88891831-2	s 9.5	1125.60
10 Reinf, Inner Body	R/L 25717336-7		10.71
11 Reinf, Front Hinge	R/L 25707742-3		10.71
12 Bracket, Rear Harness	R 25708938		3.54
L 25708941			3.54
*Included w/Inner Side Body Frame Assy			
13 Panel, Inner Lower Pillar	R/L 25753008-9	s 1.0	38.41
14 Panel, Inner Whlshs	R/L 25720899-900	s 3.0	199.85
15 Panel, Rear Window Drain	25669983	#2.5	69.53
#w/Back Window Glass Removed			
16 Panel, Rear Window	25749285		78.49
17 Support, Panel	03 88897672		30.81
04 N.A.			0.00

**EXTERIOR TRIM**

Refinish Front Rocker Moulding	R/L	1.5
Refinish Rear Rocker Moulding	R/L	1.3
R&I Front Rocker Moulding	R/L	.3
R&I Rear Rocker Moulding	R/L	#5

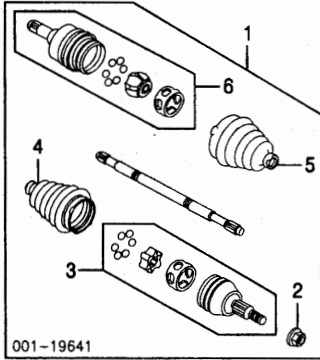


**REAR SUSPENSION Cont'd**

20 Bolt, Shock Mtg	R/L 11516873	m	3.84
21 Bar, Stabilizer			
CTS			
Soft Ride Susp	25733395	m #.8	63.00
Ride/Handling Susp	25684658	m #.8	121.47
Sport Susp	25684658	m #.8	121.47
CTS-V	25762623	m #.8	119.20
*Includes R&R Stabilizer Links, Brackets & Bushings, Not Included in O/H			
22 Link, Stabilizer Bar	R/L 25740519-8	m #.4	33.82
#Not Included In O/H			
23 Bushing, Bar			
CTS			
Soft Ride Susp	R/L 25733396	m #.3	28.20
Ride/Handling Susp	R/L 25741039	m #.3	30.30
Sport Susp	R/L 25741039	m #.3	30.30
CTS-V	R/L 25762624	m #.3	29.95
24 Bracket, Bushing	R/L 25684661	m #.3	14.39
#R&R One Side Complete, Not Included in O/H			

**REAR DRIVE AXLE**

R&I Axle Shaft Assy ..... R/Lm #2.9  
 #w/Rear Knuckle Removed Deduct 2.6



001-19641

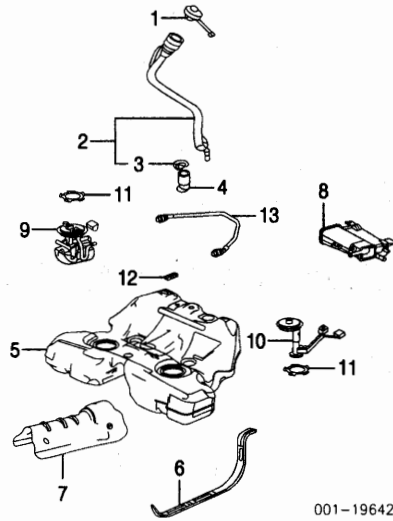
1 Shaft Assy, Rear Axle			
CTS			
Man Trans	R/L 26095531-2	m #2.9	795.23
Auto Trans			
3.2L Eng	R/L 26091088-7	m #2.9	492.85
3.6L Eng	R 26101042	m #2.9	781.98
	L 26101041	m #2.9	775.00
CTS-V	R/L 89047647-8	m #2.9	475.00
#w/Rear Knuckle Removed Deduct 2.6			
2 Nut, Lock (a)	R/L 10257766	m	9.13
(a) Order by Application			
3 Joint, Outer Axle	R/L 26091454	m #.6	282.95
4 Boot Kit, Outer			
CTS	R/L 26091452	m #.6	35.83
CTS-V	R/L 88952506	m #.6	54.04
5 Boot Kit, Inner			
CTS	R/L 26091453	m #.6	44.21
CTS-V	R/L 89047823	m #.6	43.83
6 Joint, Inner Axle			
CTS			
3.2L Eng	R/L 26091455	m #.6	282.95
3.6L Eng	R/L 26101043	m #.6	201.75
CTS-V	R/L N.A.	m #.6	0.00
#Included w/Rear Axle Shaft Assy			
#R&R One Side Complete, w/Axle Shaft Assy Removed			

**FUEL TANK**

R&I Fuel Tank ..... 4.0  
 NOTE: R&R Does Not include drain and refill.

Illustration Located in Next Column

1 Cap, Filler	03 22660003		8.72
	04 10326370		16.38
2 Pipe Assy, Fuel Filler	25745472		91.44
3 Clamp, Filler Hose (2)	1470030		3.36
#Included w/Fuel Filler Pipe Assy			
4 Hose, Fuel Filler			
CTS			
3.2L Eng	25690360		33.50
3.6L Eng	25727710		66.02
CTS-V	25727710		66.02
5 Tank, Fuel	03 25750933	m 4.3	576.05
	04 25764415	m 4.3	832.54
6 Strap, Fuel Tank	R/L 25679207		17.98
7 Shield, Tank	25679209		83.00
8 Canister, Vapor-See Emission System Section			
9 Module, Fuel Pump			
CTS			
	03 25756353	m #3.4	448.61
	04 25764424	m #3.4	448.61
CTS-V	25766500	m #3.4	460.20
10 Sender, Fuel	25756354	m #3.4	340.34



001-19642

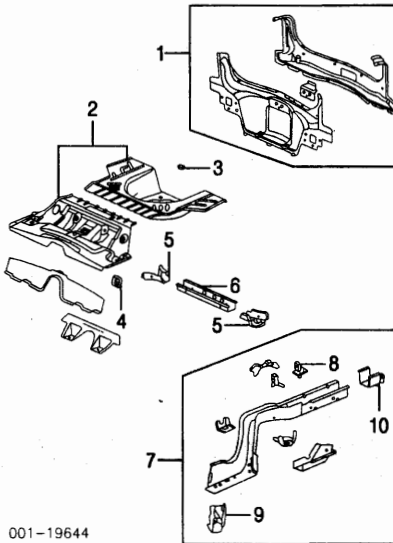
#Order by Application			
11 Retainer, Pump/Sender (2)	25740096	m #3.4	18.68
12 Sensor, Fuel Pressure	22678829	m #3.4	39.93
#Included in R&R Fuel Tank			
13 Pipe, Fuel Feed	25756974	m	57.75

**REAR BODY**

Use Procedure Explanations 26 and 28 with the following text.

**SHEET METAL**

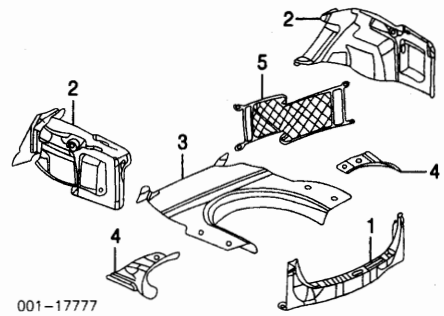
Refinish Rear Body Panel	1.5
Add for Edge & Interior	.8
Refinish Rear Compartment Floor Panel	1.5



001-19644

1 Panel, Rear Body	25761449	#8.0	160.10
#Deduct 3.0 w/Each Quarter Panel Removed, Deduction Includes Common Surfaces & Included Operations			
2 Panel, Rear Compt Floor	88891833	#10.0	438.56
#w/Rear Body Panel Removed			
3 Bracket, Spare Wheel	25650571		13.49
4 Brkt, Fuel Tank	R/L 25675853		6.00
5 Extension, Rear Floor	R/L 25664869	#5.5	15.33
6 Bar, Floor Panel	25697803	#5.5	87.35
#R&R Complete			
7 Rail Assy, Rear Side	R/L 25737576-7	s #8.5	518.79
#w/Rear Body Panel Removed, w/Rear Compt Floor Panel Removed Deduct 3.0			
8 Extension, Rear	R 25687130-1	s	5.42
9 Reinf, Rear	R 25741025	s	33.70
	L 25737579	s	35.47
10 Extension, Rail	R/L 25664871	s #3.5	24.98
#Included w/Rear Side Rail Assy			
#w/Rear Body Panel Removed			

**INTERIOR TRIM**



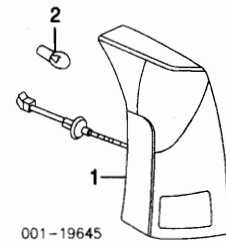
001-17777

1 Panel, Rear Body Sill	25760604		62.65
2 Panel, Trim	R 25751891	.3	89.93
	L 25751894	.3	89.93
3 Trim, Lower Compt	25720905		220.32
4 Panel, Frt Compt Trim	R/L 25743036-5		3.95
5 Net, Convenience	25714987		47.59

**REAR LAMPS**

**COMBINATION LAMP**

R&I Combination Lamp ..... R/L #.4  
 #Includes R&R/Rear Body Sill Panel

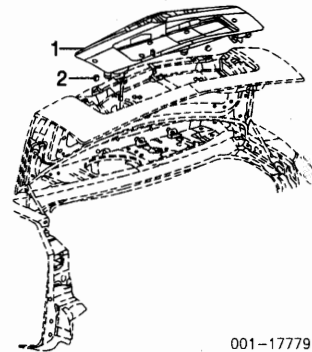


001-19645

1 Lamp, Combination	R/L 25746426-5	#.4	252.67
#Includes R&R/Rear Body Sill Panel			
2 Bulb			
Stop/Tail Lamp (2/Side)	R/L N.A.		0.00
Signal Lamp	R/L N.A.		0.00
Side Marker Lamp	R/L N.A.		0.00

**BACK-UP/LICENSE LAMP**

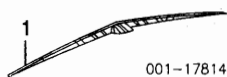
R&I Back-Up/License Lamp ..... #.4  
 #Includes R&I Inner Lid Trim, Included in R&R Luggage Lid



001-17779

1 Lamp, Back-Up/License			
Black (RPO-41U)	25763598	#.6	506.02
Blue (RPO-25U)	25763596	#.6	506.02
Bronze (RPO-54U)	25763600	#.6	506.02
Gray	03 25764806	#.6	510.00
Green (RPO-92U)	25763603	#.6	506.02
Orange	03 25763602	#.6	506.02
Red			
RPO-29U	25763597	#.6	506.02
RPO-84U	03 12335784	#.6	506.02
Silver			
RPO-12U	03 12335783	#.6	506.02
RPO-42U	25763599	#.6	506.02
RPO-67U	25763601	#.6	506.02
White (RPO-98U)	25763604	#.6	506.02
#Includes R&I Inner Lid Trim			
2 Retainer, Lamp (3)	25736754		3.67
Bulb			
Back-Up Lamp	R/L N.A.		0.00
License Lamp	R/L 1999382		2.96

**HIGH MOUNT STOP LAMP**



1 Lamp, Stop Bulb	21994312 9442441	#5	350.00 2.27
-------------------	---------------------	----	----------------

#Includes R&I Back-Up/License Lamp, Included in R&R Back-Up/License Lamp

**REAR BUMPER**

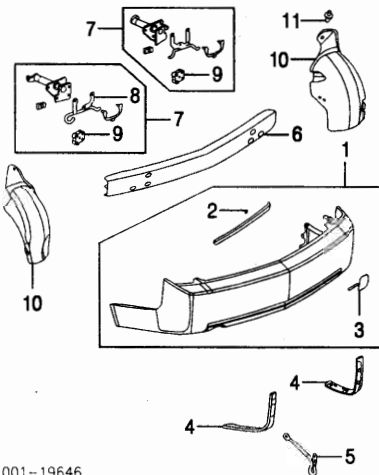
Use Procedure Explanations 27 and 28 with the following text.

Refinish Rear Cover Assy	2.5
Refinish Impact Bar	.5
R&I Rear Cover Assy	1.3
R&I Bumper Assy	#1.5

#Includes R&I Rear Cover Assy

O/H Bumper Assy (Includes R&I)	1.7
--------------------------------	-----

NOTE: All Parts in this section are included in overhaul unless noted otherwise.



001-19646

<b>1 Cover Assy, Rear (P)</b>			
CTS			
3.2L Eng	12335546	1.4	470.00
3.6L Eng	12335719	1.4	470.00
CTS-V	12335776	1.4	532.69
<i>(P) Paint to Match</i>			
<b>2 Nut, Retainer (2/Side)</b>			
R/L	14093869		58
L	12335718		41.63
<i>#Included w/Rear Cover Assy</i>			
<b>4 Bracket, Rear Cover</b>			
R/L	25761444-5	#2	3.63
<i>#w/Bumper Assy Removed, Not Included in O/H</i>			
<b>5 Hook, Tow</b>			
	25718706	#2	30.51
<i>#Not Included in O/H</i>			
<b>6 Bar, Impact Absorber Assy, Impact</b>			
CTS			
3.2L Eng	R/L 25746734-3	#2	123.83
3.6L Eng	R 25749795	#2	118.00
	L 25746733	#2	123.83
	R 25749795	#2	118.00
	L 25746733	#2	123.83
<i>#w/Bumper Assy Removed, Not Included in O/H</i>			
<b>8 Bracket, Tailpipe Hanger</b>			
L	25755350		13.75
<b>9 Insulator, Exhaust</b>			
R/L	25726418		4.04
<i>#Included w/Impact Absorber Assy</i>			
<b>10 Extension, Cover</b>			
CTS	R/L 25664524-5	.5	28.85
CTS-V	R/L 25773224-5	.5	15.08
<b>11 Retainer, Extension (6/Side)</b>			
R/L	11518017		3.84

**DEVILLE 2000-04**

**SECTION INDEX**

A/C /HEATER/VENTILATION	137
A/C REFRIGERANT CAPACITIES	137
ABS/BRAKES	139
AIR BAG SYSTEM	139
AIR CLEANER	143
BACK WINDOW	149
CENTER CONSOLE	145
CLEAR COAT IDENTIFICATION	135
COOLING	137
COWL & DASH	145
CRUISE CONTROL SYSTEM	140
ELECTRICAL	144
ELECTRONIC SUSPENSION COMPONENTS	140
EMISSION SYSTEM	143
ENGINE/TRANS	143
ENGINE/TRANS MOUNTS	143
EXHAUST	143
FRONT BUMPER	135
FRONT DOOR	147
FRONT DRIVE AXLE	141
FRONT FENDER	138
FRONT INNER STRUCTURE	138
FRONT LAMPS	136
FRONT SEAT	146
FRONT STEERING LINKAGE/GEAR	141
FRONT SUSPENSION	140
FUEL TANK	151
GRILLE	136
HOOD	137
INFORMATION LABELS	135
INSTRUMENT PANEL	145
LUGGAGE LID	150
PAINT CODE LOCATION	135
REAR BODY	152
REAR BUMPER	152
REAR DOOR	148
REAR LAMPS	152
REAR SEAT	146
REAR SUSPENSION	151
ROCKER/PILLARS/FLOOR	146
ROOF	149
SEAT BELTS	146
SIDE BODY	149
SPECIAL CAUTIONS	135
STEERING PUMP	141
STEERING WHEEL/COLUMN	141
SUNROOF	149
UNDERHOOD DIMENSIONS	138
WHEEL	140
WINDSHIELD	144

**SPECIAL CAUTIONS**

**SRS**

Refer to Procedure Explanation 29 for Supplemental Restraint/Air Bag Special Cautions.

**PAINT CODE LOCATION**

Paint code located underside of spare tire cover.

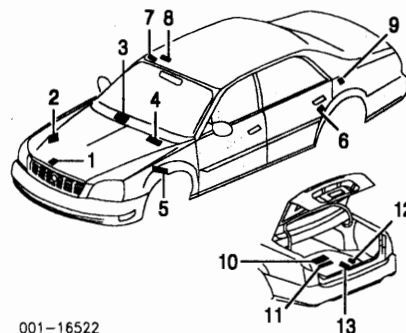
**CLEAR COAT IDENTIFICATION**

All colors are clear coat. Mary Kay Pink Pearl (Codes 06 & 09), White Diamond Met (Codes 78, 93 & 98) and Red Pearl (Code 86) are three stage.

**INFORMATION LABELS**

Illustration Located in Next Column

1 Label, Cooling/Air Bag	25665419	14.00
2 Label, A/C Charge Caution	02-04 25731324	14.00
Information	00-01 25636789	14.00
02-04	25731323	14.00
3 Label, Air Bag Module Caution	00 15001745	14.00



001-16522

<b>4 Label, Emission</b>	01-04 15765539	14.00
	00 12562473	14.00
	01 12564042	14.00
	02 12565736	14.00
<b>5 Label, Air Bag Service Notice</b>	03 12577538	14.00
	04 12573135	d12.07
	02-03 10447357	d11.03
	04 N.A.	0.00
<b>6 Label, Child Security Lock</b>	02-03 R/L 25709393-4	14.00
	04 R/L 12450721	14.00
<b>7 Label, Air Bag Information (2)</b>	15006352	11.24
<b>8 Label, Air Bag Caution (2)</b>	15007237	14.00
<b>9 Label, Fuel</b>	25633060	10.47
<i>(P) Order by Application</i>		
<b>Label, Jack Usage</b>		
10 Compact Spare	25692075	14.00
11 Full Size Spare	01 25691107	14.00
	02-04 25740271	44.30
<b>12 Label, Jack Caution</b>	10301764	14.00
<b>13 Label, Jack Location Info</b>	25695289	14.00

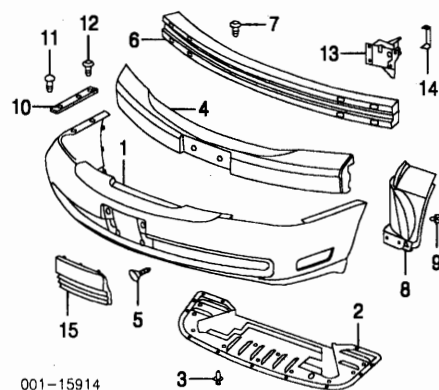
Label, Identification-See Front Inner Structure Section

**FRONT BUMPER**

Use Procedure Explanations 1 and 28 with the following text.

Refinish Front Cover	2.4
R&I Front Bumper Assy	#1.4
<i>#Includes R&amp;I/R&amp;R &amp; Air Deflector</i>	
O/H Front Bumper Assy (Includes R&I)	#2.0
<i>#Includes R&amp;I/R&amp;R Cornering Lamp Assy</i>	
Add to R&R/O/H Bumper Cover	
w/Fog Lamps	#4
<i>#Includes R&amp;I/R&amp;R Fog Lamps</i>	

NOTE: All Parts in this section are included in overhaul unless noted otherwise.



001-15914

<b>1 Cover, Front (P)</b>		
Base Model		
w/Fog Lamps	12482905	#1.8 391.44
w/o Fog Lamps	12482904	#1.8 391.44
DHS Model	12482904	#1.8 391.44
DTS Model	12482905	#1.8 391.44
<i>(P) Paint to Match</i>		
<i>#Includes R&amp;I/R&amp;R Cornering Lamp Assy &amp; Air Deflector</i>		
<b>2 Deflector, Air</b>	25721646	.3 38.90
<b>3 Retainer (19)</b>	14093088	.68
<b>4 Absorber, Impact</b>	25659760	IOH 137.15
<b>5 Retainer, Absorber</b>		
USA (2)	25631448	1.05
Canada (Kit)	N.A.	0.00
<b>6 Bar, Impact</b>	25659759	IOH 224.81
<b>7 Retainer, Impact Bar (4)</b>	10121502	.30
<b>8 Extension, Cover</b>	R/L 25759742-1	.2 21.54
<b>9 Retainer, Extension (5/Side)</b>	R/L 11518017	3.84
<b>10 Reinf, Cover</b>	R/L 25659762	18.48
<b>11 Stud</b>	R/L 11517103	3.84
<b>12 Retainer, Reinf</b>	R/L 10121502	.30
<b>13 Bracket, Mounting</b>	R/L 25675333-2	#3 39.62
<i>#w/Bumper Assy Removed, Not Included in O/H</i>		
<b>14 Plate, Stud</b>	R/L 25742594	3.78